

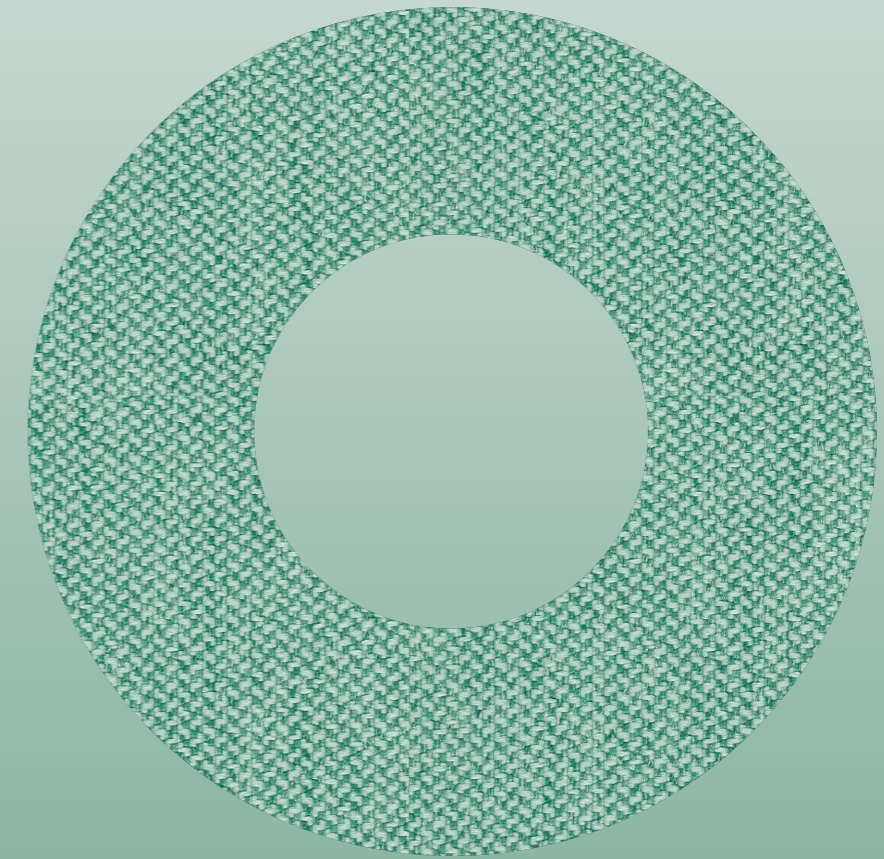
ONLEAD

400 886 8212  
<https://www.onleadglobal.com/>

**East China Production Base**  
No.121 Shuanghu Road, Gaochun  
EconomicDevelopment Zone, Nanjing  
**Central China Production Base**  
Onlead Technology Park, Changxing Avenue  
Dongbao District, Jingmen City



# OFFICE FURNITURE



CREATE A BETTER OFFICE LIFE.

2025

CATALOG

ONLEAD

# CONTENTS

SINCE  
1996  
06.28

01p

## ABOUT US

Company Profile	01
Designer Team	03
Production Strength	06
ESG	07

12p

## OUR SOLUTIONS

Administrative Space	11
Leisure Space	79
Office Space	97
Meeting Space	139
Public Space	171

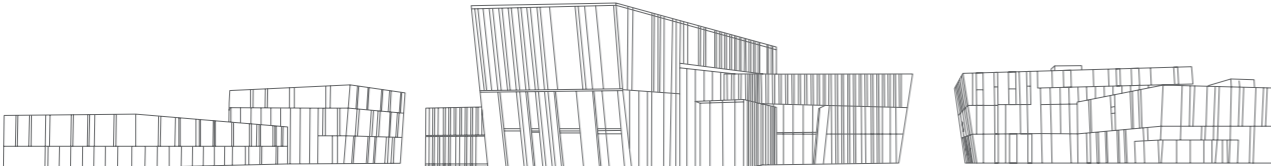
# COMPANY PROFILE

## ABOUT US

Established in 1996, ONLEAD specializes in the research and development (R&D) and manufacturing of furniture for smart offices, intelligent medical care, teaching and scientific research, and hotels and apartments. We also provide comprehensive commercial space solutions for our clients.

Focusing on the high-end market, ONLEAD has earned widespread recognition for its innovative design, superior quality, and exceptional service. Driven by an innovation-led development strategy, ONLEAD has established significant technological advantages in the industry through continuous independent development and the application of technological advancements. The company operates a laboratory certified by the China National Accreditation Service for Conformity Assessment (CNAS) and has been designated a national industrial design center, a Jiangsu Provincial Enterprise Technology Center, a Jiangsu Provincial Engineering Technology Research Center, and a Jiangsu Specialized, Sophisticated, Distinctive, and New Little Giant Enterprise. Furthermore, ONLEAD is recognized as a key enterprise in the Jiangsu smart home sector. ONLEAD actively participates in industry development and regulation, having formulated numerous national, industry, and group standards.

In 2023, the company was honored as a "National Furniture Standardization Advanced Collective" and was listed among the "Leaders" in Jiangsu Provincial Enterprise Standards, demonstrating its leadership in the high-quality development of the furniture industry. Committed to social responsibility, ONLEAD engages in charitable and public welfare activities, supporting poverty alleviation and rural revitalization. The company donates funds to charitable organizations, foundations, and welfare homes, and provides materials to institutions such as schools and health centers, contributing to the advancement of charitable causes. Upholding compliance and integrity, ONLEAD has consistently been recognized as a "Contract-abiding, Credit-respecting Enterprise" and a "National Quality Int.



# Commercial Furniture Solutions Provider

Our own property production base  
has an area of over 600,000 m<sup>2</sup>

# 600,000<sup>+</sup>

m<sup>2</sup>

Paid in registered capital: 258 million

# 258

million

More than 150 global service institutions

# 150<sup>+</sup>

# DESIGNER'S TEAM



## Venus ( Italy )

Product Designer

Europe new designer representative, focused on designing office furniture for more than 10 years, familiar with the Chinese office furniture conditions. Set up Kevo designer studio. What's more, he is the main designer of ONLEAD Parkerseries product.

## Simone Caronni ( Milan )

Product Designer

Originally from Milan, he graduated from the New Academy of Fine Arts in Italy, where he studied product design. He believes that good design is when you are satisfied and happy with the use of a specific product or service.



## Sandra Petrusca ( Romania )

Architect Designer

New designer representative from Romania. Architecture and Fashion are both about culture and people and this is how they interconnect. She can see the intersection between these fields.



## Tim Bian ( China )

ONLEAD Group Pre-sales Engineer

As the pre-sales support of the group's major projects, Tim has an in-depth understanding of the customer needs and pain points, and can provide the best product solutions for them. By far, Tim has offered service for ByteDance, Huawei, FAW-Volkswagen and many other famous companies.



## Dario Javier Sosio ( Italy )

Product Designer

A young designer with a bi-cultural background in Italy and Spain, he believes in the necessity of cultivating his own garden within heart and mind. Live simply and quietly, find inner peace, joy, avoid external worries and focus on the design you love.

## R&D STRENGTH

ONLEAD Group adheres to an innovation-driven development strategy. Through continuous independent research and development and the transformation of technological achievements, it has formed a significant technological advantage in the industry. Up to now, with the efforts of Onlead domestic R&D team and the cooperation with the leading European design studios, Onlead has had over 1,000 patents with independent intellectual property rights.

# PRODUCTION STRENGTH

## EASTERN CHINA PRODUCTION BASE

The East China production base positioned Gaochun, Nanjing, and designed by the internationally renowned firm Hassell, has obtained LEED Gold certification for green buildings and WELL v2 Platinum certification for healthy buildings, and owns the laboratory certificated by China National Accreditation Service for Conformity Assessment (CNAS). The East China Phase II industrial park was completed and put into operation in 2023, aiming to deeply develop the medical and health furniture industry chain.



## CENTRAL CHINA PRODUCTION BASE

The Central China production base is located in Dongbao, Jingmen, with a total area of 430,000 square meters, which commenced operations in June 2022. It is a domestically leading and internationally first-class intelligent manufacturing industrial park.



## INTELLICENT MANUFACTURING IN CHINA

German-style modern industrial plants were comprehensively introduced advanced production equipment from Germany, Italy, Japan, and other countries to create multiple automated production lines.

The full range of product lines includes solid wood furniture, panel furniture, upholstered furniture (sofa, seat), metal furniture, screens, etc.



# ESG

## Environment Social Responsibility Corporate Governance

The ESG evaluation system evaluates the sustainability of enterprise operation and its impact on social values from three dimensions: environment, society, and corporate governance, emphasizing that enterprises should focus on environmental protection, fulfill social responsibilities, and improve governance level.

## Environment

### 01 PARK PHOTOVOLTAIC POWER GENERATION PROJECT

The East China production base and Central China production base respectively introduce distributed photovoltaic power generation projects, and the annual power generation of the two bases can reach 20 million Kw·h, the project cycle is 25 years, the total power generation is 500 million Kw·h, and the annual carbon dioxide emission reduction is achieved.

### 02 FSC FOREST CERTIFICATION WOOD

Relying on the world's leading technology and product resources, the group selects high-quality materials around the world, selects FSC forest certified wood, adopts healthy and environmentally friendly coatings, uses green manufacturing technology, implements quality control throughout the process, and creates green, intelligent and comfortable furniture products.

### 03 APPLICATION OF WASTE GAS/WASTE WATER/ WASTE RESIDUES TREATMENT FACILITIES AND TECHNOLOGICAL TRANSFORMATION UPGRADE

The Group has installed a complete set of waste gas treatment facilities, central dust removal system, waste water recycling system, UV LED low energy UV curing equipment and other production supporting equipment, and has implemented no external emission control measures.

### 04 IMPLEMENTATION OF FORMALDEHYDE-FREE STRATEGY

On the occasion of the World Aldehyde Free Day in 2022, the Group officially opened the upgrade of the "aldehyde free strategy", launched the ENF grade aldehyde free board of MDI aldehyde free ecological glue, took the lead in the health protection battle of the commercial space furniture industry, introduced the concept of aldehyde free in the field of commercial space, actively promoted the green, healthy, aldehyde free environmental concept and strategic layout, and promoted the healthy office lifestyle.

### 05 OCEANIC FABRIC

Oceanic fabrics are made from a blend of 50% SEAQUAL yarn and 50% recycled polyester yarn. It is made entirely of recycled plastic discarded in the ocean, and the raw material used to make yarn is taken from discarded plastic bottles in landfills.

### 06 WELL V2 PLATINUM CERTIFICATION

The Group headquarters received the global WELL V2 Platinum certification in 2021, which is another important international certification in the field of health and building space after the Green Building LEED Gold certification in 2016, and is the first project in the Chinese furniture industry to receive the WELL V2 platinum certification.

### 07 APPLICATION OF NEW ENVIRONMENTAL PROTECTION EQUIPMENT AND MATERIALS

As a pilot demonstration unit of the water-based paint promotion project of 100 technical changes, the Group participates in the research of the standards and technical reform of the use of water-based paint, and applies water-based paint to the production of the whole line of products. In addition, the partition panel uses PET decorative panels. PET is one of the most environmentally friendly materials in plastics, can come into direct contact with food, uses renewable materials, and has no negative impact on the environment.

### 08 IMPLEMENTATION OF "CARBON-NEUTRAL MANAGEMENT SYSTEM"

The group has passed the carbon neutral management system certification, ISO14001 environmental management system certification, China Environmental Label (ten rings) certification, etc., and won the "product carbon footprint Certificate", "Clean production unit", "China Green Choice", "Guangdong Province furniture Industry transformation and upgrading demonstration Enterprise", "Annual environmental Social responsibility enterprise" and other honors, and was named "Belt and Road". Green leader "" Green leader enterprise".



# Social

## SOCIAL RESPONSIBILITY

### PEOPLE-ORIENTED, TAPPING INTO TALENTS

The Group has established a two-way empowering talent development mechanism. It organizes network training, and conducts outdoor team-building activities to advocate for joyful work. Meanwhile, it has established a "mutual aid fund" to help employees alleviate burdens, providing a working environment where employees can fully unleash their potential and creativity to the maximum extent.

### CHARITABLE PUBLIC WELFARE, POVERTY ALLEVIATION AND ASSISTANCE

Committed to fulfilling social responsibilities, the Group participates in charitable and public welfare activities, implements poverty alleviation and rural revitalization efforts, donates funds to charitable organizations such as charities, foundations, and welfare homes, and contributes materials to institutions like schools and health centers. It uses practical actions to support the development of charitable causes.

### FACING THE PANDEMIC TOGETHER, STANDING WATCH AND HELPING EACH OTHER

During the pandemic, while the Group rigorously implemented pandemic prevention and control measures, it actively mobilized various branches to organize donation activities to support the frontline of pandemic prevention. The branches in Shanghai, Wuhan, Xuzhou, Hefei, donated to multiple medical institutions, providing pandemic prevention materials such as medical furniture and masks, contributing to the thorough victory in the fight against the pandemic.



# Governance

## CORPORATE GOVERNANCE

### INTEGRITY-BASED

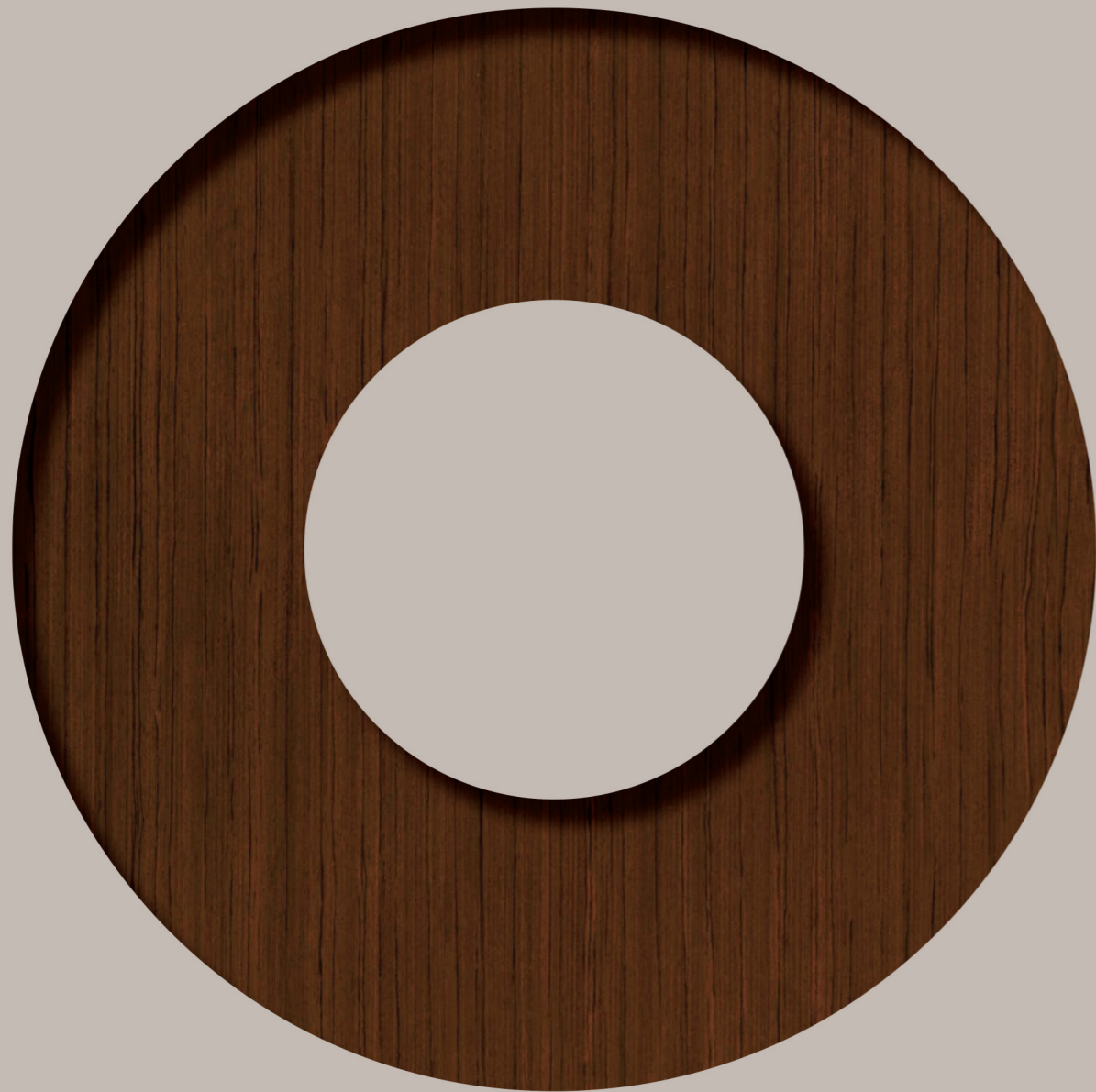
The Group adheres to integrity in treating customers, suppliers, and dealers, has been awarded the title of "Contract-abiding, Credit-respecting Enterprise" for many consecutive years, and has obtained the "AAA Grade Enterprise Credit Rating Certificate" and "AAA Grade Integrity Operation Demonstration Unit Certificate".

### CRAFTSMANSHIP AND EXCELLENCE

The Group has introduced advanced production equipment such as the Italian Salvagnini S4+P4 metal sheet flexible production line, the German HOMAG CNC drilling processing center, and the domestic office furniture industry's first fully automatic flexible production line integrated control system with robots, and possesses a CNAS certified testing experimental center.

### ADHERING TO TRADITION WHILE INNOVATING

Since its inception, the Group has deepened the integration of industry and education, as well as cooperation between enterprises and universities. It has established a collaborative research and development mechanism with universities. Consequently, various projects including teacher enterprise practice stations and internship and employment bases have been implemented successively. The Group was selected as the "Jiangsu Provincial Practice Base for Female College Students' Entrepreneurship and Employment". The Group also formulates the "Spark Talent Program" focused on cultivating outstanding graduating students. For several consecutive years, it has conducted large-scale campus recruitment activities in various institutions of higher education.



# *Executive Space*

**Wood Veneer Executive Desk**

MOUNTAIN	13
BRIDGE	15
DURHAM	17
X	19
KALER	21
KASSETT	23
LANDY	25
LANGE	27
COLEMAN	29
NOAH	31
CHRIS	33
LUCAS	35
BOKLEIS	37
PUGLIA	39
CONDOR	41
CASA	43
HE	45
MUSE	47
CALDER	49
UNITE	51
AALTO	53

**Executive Sofa**

NOAH	55
SNOW	56
HEINK	57
SQUARE	58
ARES	59
KAY	60
VITTON	61
LANGE	62
KALER	63
CARLSSON	64
MOUNTAIN	65
METZ	66
SEATTLE	67
CROWN	68
GLEN	69
JEFF	70

**Executive Desk**

CARLSSON	69
KASSETT	74
GLEN	75
UNITE	75

**Executive Chair**

ROY	77
KALER	78
HERHAN	78
RYE	78
COFFEY	78
BOCKER	78
CLIO	78
Y CHAIR	78
ATOM	78
KENO	78
FROG	78
HARRIS	78

# MOUNTAIN EXECUTIVE DESK

We go back in design history to the "Arts and Crafts" era that defined elegance, sensuality and refinement. We use the natural and sensual design language to bring the poetry of the Art Nouveau era into the modern executive office space. We bring the poetry of the Art Nouveau era, bringing fantasy and romance to the modern executive office space. Extracting the elements of Chinese landscape, the simple lines, breaking the traditional straight line baffle, using the beautiful curve of the landscape as the front baffle design elements, is improving to a great extent the recognition of the product.



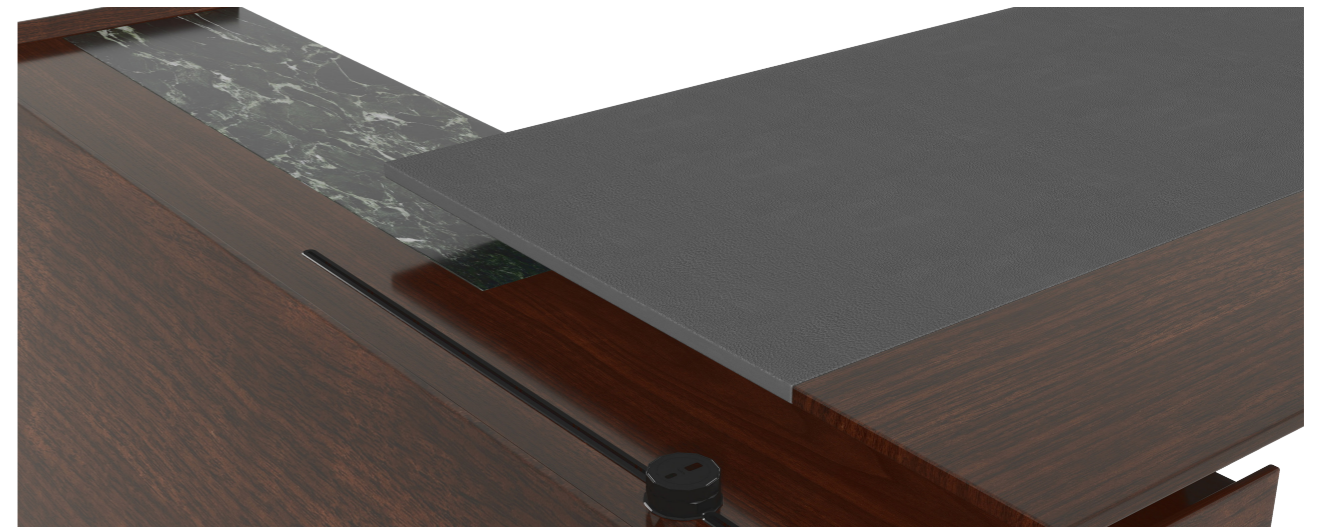
# BRIDGE EXECUTIVE DESK

Bridge, meaning water beam. Leading to dreams, connecting reality and the future, Leading to the soul, connecting trust and tacit understanding. Bridge Executive Desk incorporates bridge pier elements into the design of the desk legs. Take the bridge pier as the model, the proportion is harmonious, and it has a strong bearing capacity. Integrating symbolic meaning with modern design, giving the Bridge an extraordinary power beauty. Pursue excellence from the whole to the details, presenting an office space that is magnificent, designed, tasteful, and elegant.



# DURHAM EXECUTIVE DESK

The design inspiration of the Durham executive desk comes from the Ming City Wall of Nanjing. Outside the southern part of Nanjing, the ancient capital of six dynasties, the Qinhuai River is a natural moat, which is the longest, largest and best-preserved ancient city wall in the world. The wide moat water surface is set against the backdrop of the tall and solid Nanjing City Wall. The support feet of the platform are inclined at 110 degrees, symbolizing stability and elevation. The product design combines peace and beauty perfectly with simple lines, seamless turns and natural materials, creating a powerful and smooth visual effect and endowing the product with spiritual symbols.



# X EXECUTIVE DESK

The X desk is based on minimalism and interprets modern office aesthetics through geometric tension and material collision. It is specially designed for elite individuals who pursue both artistry and practicality. Through the industrial power of the X-shaped metal frame, the natural affinity of the wood veneer texture, and the artistic fluidity of the irregular-shaped countertop, an office scene that combines rigidity and flexibility is constructed. Mirror reflection blurs the boundaries of space, and the irregular countertop stimulates creative thinking, achieving a delicate balance between rational office work and emotional design





## KALER EXECUTIVE DESK

Kaler Credenza adopts Chinese ancient frame design, which irregular shape of open lattice design makes the display more artistic. Kaler completely without handles can result in plain and clean appearance. As long as press slightly, the door can open, bringing the good feelings from high-quality technologic support.



# KASSETT EXECUTIVE DESK

Kassett is at the forefront of the times.

No matter which plane you are thinking about, through the intelligent lifting system, Kassett can quickly adjust to the plane you are on every time without destroying its simple and elegant appearance.

It is the most ideal solution for spaces that require a flexible office.



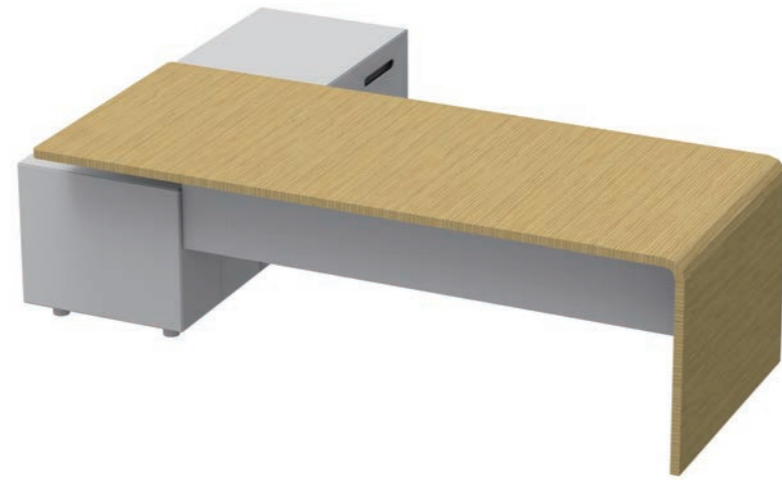
## Flexibility & Simplicity

# LANDY EXECUTIVE DESK

The characteristic design will break the shackles and let people jump out of the limits of thinking in repeated daily work.

Landy's elegant inverted corners make the two panels that are spliced look like a whole, naturally and smoothly.

The straight lines connected with curved lines also reveal the subtleties of rigidity and softness.



# LANGE EXECUTIVE DESK

As a combination of rationality and warmth, Lange conveys the pursuit of lifestyle. Through the tough straight-line shape and thin-edged inner surface design, you can glimpse the handling of the details in the simplicity and casualness, and the spirit of beauty is so inadvertently revealed.



# COLEMAN EXECUTIVE DESK

Ancient Chinese coins have an outer circle and an inner square.

Coleman's desktop integrates the cultural elements of the Chinese coin, there is a square and a circle, the square is rigid, the circle is soft, the combination of rigidity and softness, shows the unique beauty of shape. In the past, the outer space of the attached cabinet was often designed as a closed form. Considering the improvement of space utilization, the outer side of Coleman's attached cabinet is designed with open grids. Users can store books, green plants, tea sets, etc...



# NOAH EXECUTIVE DESK

The design is inspired by the story of Noah's Ark in "Genesis".the exterior design is simple and elegant, with a classic interpretation of black and white.

The main desk is divided into two pieces, the desktop leather pad and the desktop front board,the styling uses different mixes of materials to enrich the visual effects.the leather pad feels comfortable to the touch, suitable for long-term office.

The door panels of the attached cabinets all adopt the spring mechanism,and the drawers are equipped with 18-inch (450mm) Blum hidden rebound guide rails.the front end of the attached cabinet uses a brushed effect fireproof board, which is rich in layers.



# CHRIS EXECUTIVE DESK

With mellow and full shape design, Chris becomes visual focus of the space.

The fillet panels combined with bevel edge emanate the sense of grateful and comfort, meanwhile it makes people feel more safe, steady and forgivable.



## Safety & Stability

# LUCAS EXECUTIVE DESK

Lucas means friendliness and kindness, the design inspiration comes from the exterior design of the narrative Museum of George Lucas which is "father of Star Wars", by Ma Yansong, a famous Chinese architect.

Lucas Executive Desk adopts the distinctive shape of the ship, the executive desktop is inlaid with leather pads, the overall color is magnificent and sedate, gentle to the touch, the design of the Lucas desk is clear. the perfect combination of wood grain color and khaki grey imitation leather paint enhances Lucas's visual sense of stability without losing its modern flavor.



## Beautiful & Modern

# BOKLEIS EXECUTIVE DESK

Bokleis relies on simple and clear geometric combinations to construct interlaced and connected spaces, guiding light and shadow to walk between the gaps, making the sense of space richer.

The organized geometry and the disorder of stacking add vitality between convergence and release, stillness and movement.

The natural wood grain panel is matched with the environmentally friendly powder coating process, which is simple and harmonious, and the style is elegant.



## Safety & Stability

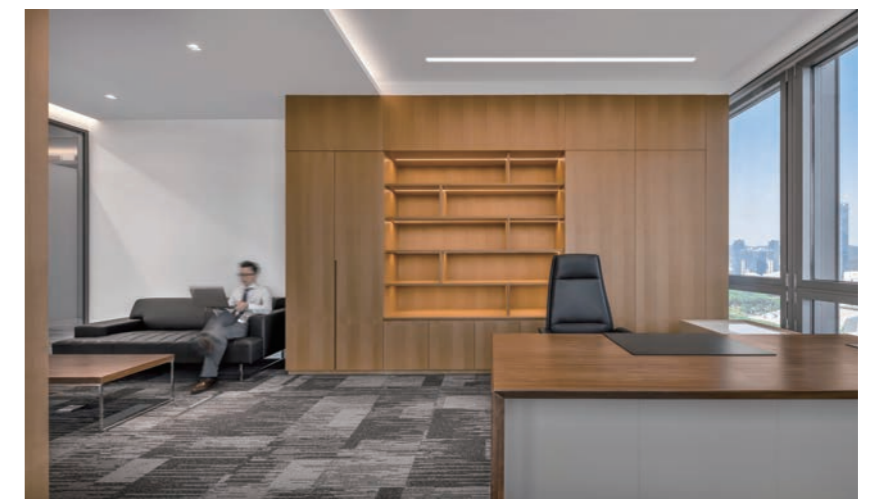
# PUGLIA EXECUTIVE DESK

The design is inspired by the Puglia region of Italy.

Puglia is rich in marble, and many churches are built with marble, which glistens in the sunset afterglow, thus giving a beautiful imagination to the Puglia Executive Desk.

Puglia Executive Desk desktop has a right angle on the inside, which is beautiful and elegant. The backslash is a single piece, which connects the main desk with the annex desk as a whole. The panel of the attached cabinet is covered with (15mm thick) Yash White marble.

The door panel of the attached cabinet is not equipped with a pull handle but with a press-bomb mechanism, the cabinet body is unified as a whole, and the door opens instantly when pressed gently. The middle of the desktop uses imitation leather paint, showing the contrast effect of different wood grain. The standard configuration of the flip line box ensures the beauty of the desktop.



# CONDOR EXECUTIVE DESK

Condor, in response to its name, is rigid and solid, unpretentious.

The design of the aluminum alloy bracket at the bottom of the main desk has the hardness of the metal.

The clever integration of wood and metal breaks through the single material, not only does it not look abrupt, but also has awe-inspiring righteousness. The straightforward and powerful line design, simple and modern style processing, having an inventive mind, reflecting the beauty of fine workmanship.



## Thick & Stable

# CASA EXECUTIVE DESK

Casa Executive Desk is generous and elegant, both practical and economical.

The desktop is curved outward, breaking the usual flat posture and making the space more tenser. The desktop and the foot are connected by decorative aluminum modules.

The design appears to be suspended, but it is stable and solid, showing the beauty of three-dimensionality.

Diversified space design of the movable cabinet can meet different storage needs.



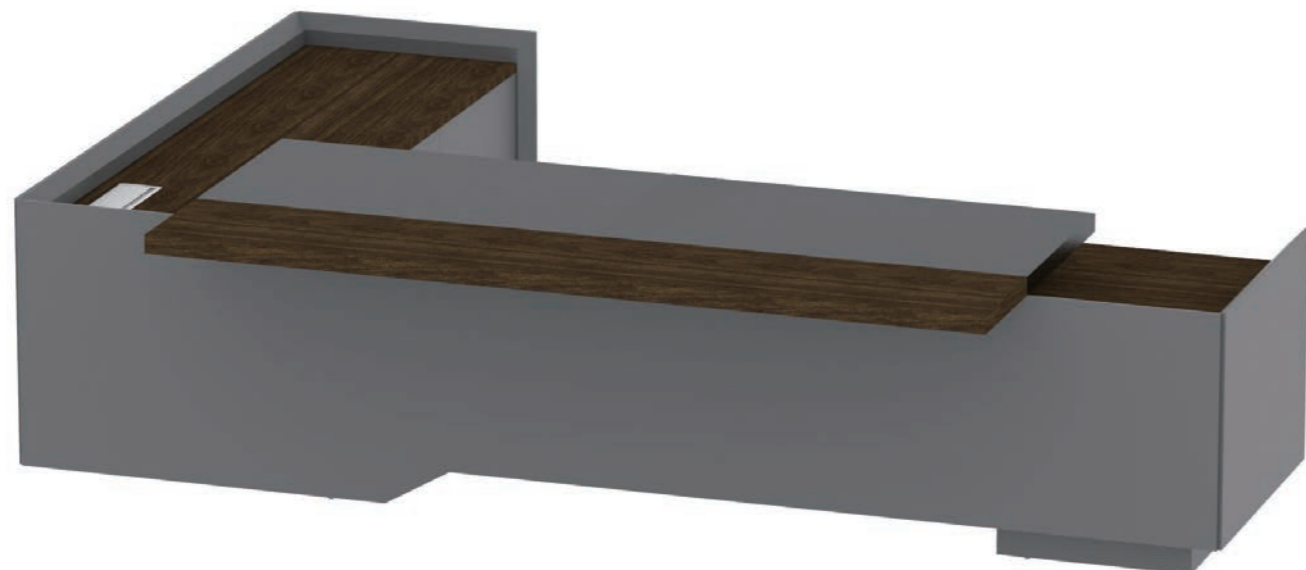
## Stable and Firm

# HE EXECUTIVE DESK

He Executive Desk is derived from the design essence of the traditional Chinese courtyard, which incorporates the patio style of "four water into the hall" and the humanistic concept of gathering gas and wealth.

The overall pattern complements each other, creating a spatial artistic conception of harmony between man and nature, and bringing people into a natural harmony with the office environment. The main desk perfectly connects the elegant leather surface with the ecological board, which greatly improves the comfort of the office;

The desktop is above the attached cabinet, which is well-placed and elegant in style. The 45° beveled design of the attached cabinet surrounds is like a slanted eave, which not only echoes the meaning of aggregation, but also prevents items from falling.



# MUSE

## EXECUTIVE DESK

Muse Executive Desk is a product that focuses on light luxury.

The combination of marble, metal, and wood grain makes the product elegant and luxurious. With Xiaou's smart socket, it is powered by the latest for-office developed technology. Use the main body cooling holes to meet the needs of users who like to use desktop computers for office work.

The side of the desktop floats outwards, which increases the agility of the product and at the same time allows the executive desk to have the function of a small conference table. The external floating design of the desktop is matched with the liftable function, which makes the negotiation, meeting and working switch freely and seamlessly. The marble pattern board is matched with the dark MFC board, which reflects the light luxury and magnanimity of the product.

Hidden frame glass door technology is adopted for the long doors on both sides and the shape is simple and the craftsmanship is exquisite.



## Art Nouveau & Lightness

# CALDER EXECUTIVE DESK

A tribute to the dynamic sculptor-Alexander Calder. Under the dynamic concept, calder Executive Desk uses abstract geometric lines and cut panels to create a sense of flow in the design and achieve a perfect visual balance with dynamic composition.

The ecological panels and aluminum trim are layered to reveal the sharpness and modern industrial style. The edges are treated with slim craftsmanship, which is fashionable and unique; the attached cabinet is designed by bullets to make the appearance neat and humanized. Calder gives the space excellent office taste and artistic charm.



# UNITE EXECUTIVE DESK

Unite means mix, unity, the design of the executive desk is the essence of various geometric forms and material mixes. The asymmetrical design pursues the balance of the senses and creates a dynamic and energetic office atmosphere. The perfect combination of wood and steel makes the overall design of the desk more modern and aesthetic.

The unique design of steel side legs echoes with the irregular desktop and baffle elements, natural and dynamic. It creates an active and dynamic charm in the space and shows an infinite personality. The 45° edge of the attached cabinet is in line with the slim beveled edge design of the desktop lacquer, creating a three-dimensional beauty.



# AALTO

## EXECUTIVE DESK

Allto achieved a unique design with a simple shape, the main desk and the attached cabinet adopt the structure of traditional eaves, forming a layered patchwork, with an obvious sense of sculpture. In addition to the appearance, Allto is also fully equipped, aesthetics and practicality are undeniably combined, no matter how busy the work is, it is methodical, green and environmentally friendly materials make the environment more comfortable and healthy.



## NOAH SOFA

Noah sofa with its simple shape, but majestic temperament, is inspired by the "Noah's Ark" story. The design strives to reconcile western cultural symbols with oriental techniques under this classic design, this way, the NOAH sofa group interprets the office-life balance and aesthetic.



**NOA-1S**  
1000×880×880mm



**NOA-2S**  
1500×880×880mm



**NOA-3S**  
2000×880×880mm

## SNOW SOFA

The design comes from simple rectangular shapes that are purely functional. Yet, with a few wellthought details like: the beveled edges and the choice for the upholstery, the Snow sofa is a sharp and functional but charming piece of furniture.



**SNO-1S**  
900×800×700mm



**SNO-2S**  
1560×800×700mm



**SNO-3S**  
2060×800×700mm

# HEINK SOFA

Heink sofa inherits a heavy industrial vibe. It has a side fold and a strong steel frame. These reveal its temperament business. An asymmetric design, on both sides, makes the overall modeling feel leveled. Low rise is broad, and it is easy to lean and sit. It is always a good place to leave a glass or a bag.



**HEI-1S**  
1140×870×920mm



**HEI-2S**  
1680×870×920mm



**HEI-3S**  
2150×870×920mm

# SQUARE SOFA

Smooth contours create an extraordinary outline, simple and fashion extend infinitely and no need too much multifarious adornment, more comfortable. And there is no lack of modern and simple fashion sense. Tan leather combined with the white metal base, combined with log pizza tea table, reveal the simple and elegant artistic style.



**SQU-1S**  
850×830×830mm



**SQU-2S**  
1420×830×830mm



**SQU-3S**  
2000×830×830mm

# ARES SOFA

Ares sofa inherits a heavy industrial vibe. It has a side fold and a strong steel frame. These reveal its temperament business. An asymmetric design, on both sides, makes the overall modeling feel leveled. Low rise is broad, and it is easy to lean and sit. It is always a good place to leave a glass or a bag.



**ARE-1S**  
1200×860×840mm



**ARE-2S**  
1800×860×760mm



**ARE-3S**  
2250×860×760mm

# KAY SOFA

Kay sofa is loose and soft casual. The leg design concept is inspired by Ming-style furniture tradition, grace, steady and elegance. When combined with modern sofa concept, it seems harmonious and unified. Kay uses a reasonable proportion, creating a qualitative rapport and appeal for traditional philosophy.



**KAY-1S**  
1050×860×725mm



**KAY-2S**  
1750×860×725mm



**KAY-3S**  
2400×860×1200mm

## VITTON SOFA

Viton sofa carries around a majestic beauty, all while giving quiet and peaceful feel. The slightly benton cushion is perfect for leaning on, fit the human body in sitting model, relaxation the neck stress. Broad wooden armrests, and the fine texture, can inspire freedom of movement. Also can put on the tea cups and other goods.



**VIT-1S**  
940×850×780mm



**VIT-2S**  
1440×850×780mm



**VIT-3S**  
1980×850×780mm

## LANGE SOFA

The combination of leather and wood as raw material but also as crafting techniques, underlines the strong lines and square framing of the sofa.



**LAN-1S**  
900×790×780mm



**LAN-2S**  
1500×790×780mm



**LAN-3S**  
2100×790×780mm

# KALER SOFA

Being defined by a strong material combination: the wood and the leather, the KALER sofa has a visually strong presence and demands attention in any space. It is true that such a powerful appearance can have a strong impact on self-confidence and contribute to a more powerful self-image.



**KAL-1S-A**  
1000×922×820mm



**KAL-2S-A**  
1600×922×820mm



**KAL-3S-A**  
2200×922×820mm



**KAL-1S-B**  
1060×922×820mm



**KAL-2S-B**  
1660×922×820mm



**KAL-3S-B**  
2200×922×820mm

# CARLSSON SOFA

The traditional Chinese velvet color: a smooth combination of pastel red and grey. This in turn underlines the mysterious zen appearance of the Carlsson sofa group. Quiet and versatile due to the smoothness of the fabric and the use of color, the silhouette of this sofa emphasizes the comfort and relaxed fit of sitting.



**CAR-SF832-1S**  
960×970×750mm



**CAR-SF832-2S**  
1580×970×750mm



**CAR-SF832-3S**  
2200×970×750mm

# MOUNTAIN SOFA

The sofa uses selected high-end leather imports, breathable cowhide. Not only the quality is guaranteed but the texture fits the series in such a way that it highlights its precious vibe.



**MOU-SF835-1S**  
1000×870×810mm



**MOU-SF835-2S**  
1600×870×810mm



**MOU-SF835-3S**  
3000×870×810mm

# METZ SOFA

Cast in Q235 rectangular tube steel, the legs of the Metz sofa are a graceful representation of contemporary art. The staggering simplicity only points out the beauty of technology that supports high-quality industrial design.



**MET-SF830-1S**  
940×880×800mm



**MET-SF830-2S**  
1600×880×800mm



**MET-SF830-3S**  
2200×880×800mm

# SEATTLE SOFA

The curved armrest design highlights the beauty of the line and the versatility of the material. Unique in shape, this sofa set definitely makes an impression. With a clear avant-garde modeling technique it is not only a functional piece but also a work of art.



**SEA-1S**  
900×720×820mm



**SEA-2S**  
1500×720×820mm



**SEA-3S**  
2100×720×820mm

# CROWN SOFA

Quietly enriching the space around, this sofa set is charmingly simple in its lines. Smooth and well-blended with a variety of spaces, it has an ease to it that makes it seem like a breath of fresh air.



**CRO-1S** 840×760×800mm  
**CRO-2S** 1400×760×800mm  
**CRO-3S** 1980×760×800mm

# GLEN SOFA

The pieces of this sofa set are simple yet authentic by the usage of raw materials. Raw wood makes the armrests and the legs of the products; wood is a warm material by nature this way making the atmosphere in the office more human centered.



**GLE-SF-824-1S**  
755x810x815mm



**GLE-SF-824-2S**  
1455x810x815mm



**GLE-SF-824-3S**  
1885x810x815mm

# JEFF SOFA

Jeff sofa is like efficient communication: the beauty of honest, high quality materials and the proportion of the seat and cushions, tell the story immediately. In pursuit of a good product, to the level of art, this sofa group is well detailed and neatly finished in its simple honesty.



**JEF-1S-C**  
800x820x800mm



**JEF-2S-C**  
1600x820x800mm



**JEF-3S-C**  
2000x820x800mm

# CARLSSON EXECUTIVE DESK

Intelligent lifting executive desk integrates health, intelligence, convenience, comfort and environmental protection.

Not only in line with the health of the office more stylish modern sense, create a richer Dynamic and enthusiastic office and negotiation space, so that employees enjoy wisdom and health Office, inspiration free release.



**CAR-DA**  
1600W\*750D\*725~1200H  
1800W\*800D\*725~1200H  
2000W\*850D\*725~1200H



**CAR-DB**  
1800W\*800D\*725~1200H  
2000W\*850D\*725~1200H



**CAR-DC**  
1800W\*1900D\*725~1200H  
2000W\*1950D\*725~1200H



**CAR-DD**  
2200W\*950D\*760H  
2400W\*1000D\*760H

# KASSETT EXECUTIVE DESK

Intelligent lifting executive desk integrates health, intelligence, convenience, comfort and environmental protection.

Not only in line with the health of the office more stylish modern sense, create a richer Dynamic and enthusiastic office and negotiation space, so that employees enjoy wisdom and health Office, inspiration free release.



**KAS-DA**

1600W×750D×725~1200H  
1800W×800D×725~1200H  
2000W×850D×725~1200H



**KAS-DB**

1800W×800D×725~1200H  
2000W×850D×725~1200H



**KAS-DC**

2200W×1000D×745~1135H  
2400W×1000D×745~1135H



**KAS-DD**

1600W×750D×725H  
1800W×800D×725H  
2000W×850D×725H



**KAS-DE**

1800W×800D×750H  
2000W×850D×750H



**KAS-DF**

2200W×1000D×760H  
2400W×1000D×760H

# GLEN EXECUTIVE DESK



# UNITE EXECUTIVE DESK

For modern simple design of administration office, the shape of office furniture is mostly simple and rich insense of design, making the space more transparent; the color is mostly homochromous, advocatesminimalism and attaches great importance to functional design.

# ROY EXECUTIVE CHAIR



Kaler



Herhan



Rye



Coffey



Bocker



Clio



Y Chair



Atom



Roy-H-89AF



Roy-M-89AF



Roy-M-89BF



Keno



Frog



Harris



# *Leisure Space*

CHUBBY	81
WING	83
S CHAIR	85
SHELL	86
MIC	87
FRANCIS	88
AMAZING	89
CONCH	90
MARCEL	91
U-RISE	92
KARL	93
CANDY	94

# CHUBBY LEISURE CHAIR

Its soft lines transcend timeless craftsmanship, thus a classic has been made.

Through an impeccable balance and subtle details, the design roots in the essence of the creative spirit and leads to a new casual style.



**S29-1S-A**  
645×625×735H  
404×411×440H



**S29-1S-B**  
645×625×735H  
404×411×440H



**S29-1S-C**  
645×625×735H  
404×411×440H



**S29-1S-D**  
645×625×735H  
404×411×440H



**S29-1SH-A**  
775×623×1240H  
488×486×440H



**S29-1SH-B**  
775×623×1240H  
488×486×440H



**S29-1SH-C**  
775×623×1240H  
488×486×440H



**S29-1SH-D**  
775×623×1240H  
488×486×440H



**S29-2S-A**  
1413×641×733H



**S29-2S-B**  
1413×641×733H



**S29-2SH-A**  
1543×622×1170H  
1258×486×440H



**S29-2SH-B**  
1543×622×1170H  
1258×486×440H



**S29-2SH-D**  
1543×622×1170H  
1258×486×440H

# WING LEISURE CHAIR

We always observe a thing from the same angle. However, we can appreciate it from the other that we can enjoy the relaxing ambiance. The texture reveals naturally the brightness and shows the touching beauty.



## S CHAIR

S chair is inspired by the flowing curves and named S chair because its shape resembles the English S. Elegant form, flowing lines and a warm wooden base with a soft cushion bag for extra comfort. This is a lounge chair, designed according to the curve of the human body. People can have a conversation on it without the feeling of back pain, on the contrary, it will make you more comfortable. Designed with the curve of the human waist size to prevent the deformation of the waist vertebrae, so as to achieve the function of protecting the waist vertebrae.



**S-CHAIR-A**  
870×813×965H



**S-CHAIR-B**  
870×813×965H

## SHELL

The trend toward open environments is driving the rise of forms such as shared workstations or unfixed workstations, providing more space for teamwork at the expense of space that requires focused attention or personal use. Instead, employees want to be able to allocate space more wisely. We have found that "mostly open" workspaces are associated with higher performance and richer experiences, while noise, privacy and ability to focus remain key determinants of workspace efficiency. In the future, it will be critical to strike the right balance between open/private and personal/group spaces. The designer took the shell as the origin of the design and extracted the lines of the shell to design this lounge chair. The whole shape is wrapped, creating a small space that is relatively quiet and private.



## MIC

In the modern office, the design of the pantry is more and more human oriented and unique. It became an essential public space in the office. Highlighting the mood is particularly important because the pantry is a place that provides employees with a short break for a conversation. As far as it is possible to create a warm, relaxing environment, it is good for employees to take a break so that they can later return to work efficiently.



## FRANCIS

Every line is the combination of art and technology. Precisely routed, every part of the chair is evenly seamed without any lines exposed, showing the extraordinary workmanship of the chair. The design is satisfying to see and experience with its intricate detailing.



## AMAZING

Good office furniture can make you feel comfortable and useful at the same time, it is also extremely great for decoration, illuminating the space with its charm.



## CONCH

The design of the CONCH comes from the bionic of the claws of "hermit crab! The color of the painted surface is sand white.

Those beautiful curves make the shell stripe design of the chair body, providing the visual impact and giving you a super comfortable sitting experience.



## MARCEL

Meet the needs of diferent spaces with diversified combinations.

Shaped spongetrapezoidal tripods, we pay attention to the relationship between points, lines andplanes. The straight, firm and powerful lines of the sofa create a more refined andsmooth combination.



## U-RISE

Create coordinated and elegant shapes, find a balance between intuitive and sensory, and deduce the artistic beauty of the times ahead.





## KARL

The infinite wisdom brings it vitality, The countless dexterous hands give it fashionable and simple shape. The whole line is smooth and elegant, and its vivid temperament is emitted from the steadiness. It's filled with the sense of technology. The appearance also presents the sense of fashion. If you observe it in the distance, you will be touched. If you are close to it, you will not resist its attraction.



## CANDY

We keep up with the trends and the times, always blend in the most advanced design elements and break through the limitations of tradition. Based on the modern simplicity of contemporary art, we embellish with our furniture style to reflect uniqueness.





# *Workstation Space*

EDINBURGH	97
CARLSSON	99
SNOW	101
DALE	103
GLEN	105
SQUARE	107
LIKE	109
ENJOY	111
LINK	113
FROG	115
OLDY	116
ATOM	117
ATOM II	118
Y CHAIR	119
Y CHAIR II	120
SENIOR	121
CALM	122
NEWCA	123
SEER	124
TABLE SCREEN	125
UNA	127
UTA	129
FRANK	131
HENNA	133
WIT	134

# EDINBURGH WORKSTATION

The Edinburgh Smart Adjustable Desk revolutionizes the healthy office ecosystem with technology. It disrupts prolonged sitting through intelligent reminders using an AI sedentary monitoring system. With a lifting range of 750-1250mm, it allows for smooth transitions between standing and sitting, as natural as breathing. The desktop is embedded with pressure sensors that precisely capture sitting posture data. Combined with smart IoT terminals, it generates personalized health reports. The visual habit ranking motivates employees to take charge of their work pace. Business managers can track team health indices in real-time via a cloud-based dashboard, harnessing digital power to create a sustainable and vibrant office space that boosts both efficiency and employee well-being. The Z-shaped cable management system adjusts effortlessly with the desktop's lifting, ensuring neat and stylish cable layout.



# CARLSSON WORKSTATION



LIT-WTE-A2-1413-A 1400\*1364\*1200  
LIT-WTE-A2-1414-A 1400\*1464\*1200  
LIT-WTE-A2-1514-A 1500\*1464\*1200  
LIT-WTE-A2-1615-A 1600\*1564\*1200



LIT-WTE-A4-2813-A 2830\*1364\*1200  
LIT-WTE-A4-2814-A 2830\*1464\*1200  
LIT-WTE-A4-3014-A 3030\*1464\*1200  
LIT-WTE-A4-3215-A 3230\*1564\*1200



LIT-WTE-AY2-1413-A 1400\*1364\*1200  
LIT-WTE-AY2-1414-A 1400\*1464\*1200  
LIT-WTE-AY2-1514-A 1500\*1464\*1200  
LIT-WTE-AY2-1615-A 1600\*1564\*1200



LIT-WTE-AY4-2813 2830\*1364\*1200  
LIT-WTE-AY4-2814 2830\*1464\*1200  
LIT-WTE-AY4-3014 3030\*1464\*1200  
LIT-WTE-AY4-3215 3230\*1564\*1200



LIT-WTE-A2-1413-A 1400\*1364\*1200  
LIT-WTE-A2-1414-A 1400\*1464\*1200  
LIT-WTE-A2-1514-A 1500\*1464\*1200  
LIT-WTE-A2-1615-A 1600\*1564\*1200



LIT-WTE-A4-2813-A 2830\*1364\*1200  
LIT-WTE-A4-2814-A 2830\*1464\*1200  
LIT-WTE-A4-3014-A 3030\*1464\*1200  
LIT-WTE-A4-3215-A 3230\*1564\*1200



LIT-WTE-AY2-1413-A 1400\*1364\*1200  
LIT-WTE-AY2-1414-A 1400\*1464\*1200  
LIT-WTE-AY2-1514-A 1500\*1464\*1200  
LIT-WTE-AY2-1615-A 1600\*1564\*1200



LIT-WTE-AY4-2813-A 2830\*1364\*1200  
LIT-WTE-AY4-2814-A 2830\*1464\*1200  
LIT-WTE-AY4-3014-A 3030\*1464\*1200  
LIT-WTE-AY4-3215-A 3230\*1564\*1200

# SNOW WORKSTATION

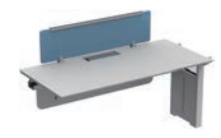
Flexible and light, regardless of the working manner - individual or team - Snow Series can draw the most effective outline for the office space. Bright and fresh desk screen stand in white Snow table, like a noble swan in the lake. Match with UTA mobile cabinet, made it more elegant and fashion and grace for the whole office space.



SNO-WTA-A1-1406 1400\*650\*750  
SNO-WTA-A1-1407 1400\*700\*750  
SNO-WTA-A1-1507 1500\*700\*750  
SNO-WTA-A1-1607 1600\*750\*750



SNO-WTA-A2-2806 1400\*650\*750  
SNO-WTA-A2-2807 1400\*700\*750  
SNO-WTA-A2-3007 1500\*700\*750  
SNO-WTA-A2-3207 1600\*750\*750



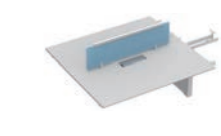
SNO-WTA-Y1-1406 1400\*650\*750  
SNO-WTA-Y1-1407 1400\*700\*750  
SNO-WTA-Y1-1507 1500\*700\*750  
SNO-WTA-Y1-1607 1600\*750\*750



SNO-WTB-A2-1413 1400\*650\*750  
SNO-WTB-A2-1414 1400\*700\*750  
SNO-WTB-A2-1514 1500\*700\*750  
SNO-WTB-A2-1615 1600\*750\*750



SNO-WTB-A4-2813 1400\*650\*750  
SNO-WTB-A4-2814 1400\*700\*750  
SNO-WTB-A4-3014 1500\*700\*750  
SNO-WTB-A4-3215 1600\*750\*750



SNO-WTB-Y2-1413 1400\*650\*750  
SNO-WTB-Y2-1414 1400\*700\*750  
SNO-WTB-Y2-1514 1500\*700\*750  
SNO-WTB-Y2-1615 1600\*750\*750



SNO-WTC-A3-2124 1100/550\*1100/550  
SNO-WTC-A3-2326 1200/600\*1200/600



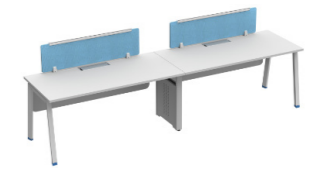
SNO-WTC-A6-4324 1100/550\*1100/550  
SNO-WTC-A6-4726 1200/600\*1200/600

# DALE WORKSTATION

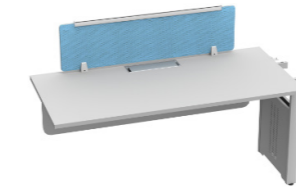
The design of the table legs introduces the shapes of 3 Chinese characters: character 'men' (character for desk), character 'kou' (character for table), and character 'chou' (character for chair). With various colors for the table tops: black, white, red, orange, green and blue, as well as a pale palette for the legs themselves, the Dale series is playful in appearance and creates a friendly and cozy working environment.



DAL-WTA-A1-1206 1200\*600\*750  
 DAL-WTA-A1-1406 1400\*650\*750  
 DAL-WTA-A1-1407 1400\*700\*750  
 DAL-WTA-A1-1507 1500\*700\*750  
 DAL-WTA-A1-1607 1600\*750\*750



DAL-WTA-A2-2406 1200\*600\*750  
 DAL-WTA-A2-2806 1400\*650\*750  
 DAL-WTA-A2-2807 1400\*700\*750  
 DAL-WTA-A2-3007 1500\*700\*750  
 DAL-WTA-A2-3207 1600\*750\*750



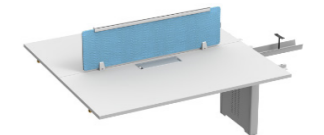
DAL-WTA-Y1 1200\*600\*750  
 DAL-WTA-Y1 1400\*650\*750  
 DAL-WTA-Y1 1400\*700\*750  
 DAL-WTA-Y1 1500\*700\*750  
 DAL-WTA-Y1 1600\*750\*750



DAL-WTB-A2-1212 1200\*600\*750  
 DAL-WTB-A2-1413 1400\*650\*750  
 DAL-WTB-A2-1414 1400\*700\*750  
 DAL-WVTB-A2-1514 1500\*700\*750  
 DAL-WTB-A2-1615 1600\*750\*750



DAL-WTB-A4-2412 1200\*600\*750  
 DAL-WTB-A4-2813 1400\*650\*750  
 DAL-WTB-A4-2814 1400\*700\*750  
 DAL-WTB-A4-3014 1500\*700\*750  
 DAL-WTB-A4-3215 1600\*750\*750



DAL-WTB-Y2 1200\*600\*750  
 DAL-WTB-Y2 1400\*650\*750  
 DAL-WTB-Y2 1400\*700\*750  
 DAL-WTB-Y2 1500\*700\*750  
 DAL-WTB-Y2 1600\*750\*750



DAL-WTC-A3-2124 1100/550\*1100/550  
 DAL-WTC-A3-2326 1200/600\*1200/600



DAL-WTC-A6-4224 1100/550\*1100/550  
 DAL-WTC-A6-4626 1200/600\*1200/600

# GLEN WORKSTATION

Glen homonym "Green" has the meaning of Green nature. Glen side leg is made of natural white ash solid wood. The decoration of these natural elements makes the office full of fresh and comfortable, and makes people feel relaxed and happy.



GLE-WTA-A1-1406 1400\*650\*750  
GLE-WTA-A1-1407 1400\*700\*750  
GLE-WTA-A1-1507 1500\*700\*750  
GLE-WTA-A1-1607 1600\*750\*750



GLE-WTA-A2-2806 1400\*650\*750  
GLE-WTA-A2-2807 1400\*700\*750  
GLE-WTA-A2-3007 1500\*700\*750  
GLE-WTA-A2-3207 1600\*750\*750



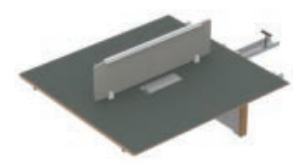
GLE-WTA-Y1-1406 1400\*650\*750  
GLE-WTA-Y1-1407 1400\*700\*750  
GLE-WTA-Y1-1507 1500\*700\*750  
GLE-WTA-Y1-1607 1600\*750\*750



GLE-WTB-A2-1413 1400\*650\*750  
GLE-WTB-A2-1414 1400\*700\*750  
GLE-WTB-A2-1514 1500\*700\*750  
GLE-WTB-A2-1615 1600\*750\*750



GLE-WTB-A4-2813 1400\*650\*750  
GLE-WTB-A4-2814 1400\*700\*750  
GLE-WTB-A4-3014 1500\*700\*750  
GLE-WTB-A4-3215 1600\*750\*750



GLE-WTB-Y2-1413 1400\*650\*750  
GLE-WTB-Y2-1414 1400\*700\*750  
GLE-WTB-Y2-1514 1500\*700\*750  
GLE-WTB-Y2-1615 1600\*750\*750



GLE-WTC-A3-2124 1100/550\*1100/550  
GLE-WTC-A3-2326 1200/600\*1200/600



GLE-WTC-A6-4216 1100/550\*1100/550  
GLE-WTC-A6-4626 1200/600\*1200/600

# SQUARE WORKSTATION



SQU-WTC-A1-1206 1200\*600\*750  
SQU-WTC-A1-1406 1400\*650\*750  
SQU-WTC-A1-1407 1400\*700\*750  
SQU-WTC-A1-1507 1500\*700\*750  
SQU-WTC-A1-1607 1600\*750\*750



SQU-WTC-A2-2406 1200\*600\*750  
SQU-WTC-A2-2806 1400\*650\*750  
SQU-WTC-A2-2807 1400\*700\*750  
SQU-WTC-A2-3007 1500\*700\*750  
SQU-WTC-A2-3207 1600\*750\*750



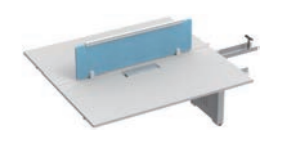
SQU-WTC-Y1-1206 1200\*600\*750  
SQU-WTC-Y1-1406 1400\*650\*750  
SQU-WTC-Y1-1407 1400\*700\*750  
SQU-WTC-Y1-1507 1500\*700\*750  
SQU-WTC-Y1-1607 1600\*750\*750



SQU-WTA-A2-1212 1200\*600\*750  
SQU-WTC-A2-1413 1400\*650\*750  
SQU-WTC-A2-1414 1400\*700\*750  
SQU-WTC-A2-1514 1500\*700\*750  
SQU-WTC-A2-1615 1600\*750\*750



SQU-WTC-A4-2412 1200\*600\*750  
SQU-WTC-A4-2813 1400\*650\*750  
SQU-WTC-A4-2814 1400\*700\*750  
SQU-WTC-A4-3014 1500\*700\*750  
SQU-WTC-A4-3215 1600\*750\*750



SQU-WTC-Y2-1212 1200\*600\*750  
SQU-WTC-Y2-1413 1400\*650\*750  
SQU-WTC-Y2-1414 1400\*700\*750  
SQU-WTC-Y2-1514 1500\*700\*750  
SQU-WTC-Y2-1615 1600\*750\*750



SQU-WTB-A2-1230 1200\*600\*750  
SQU-WTB-A2-1431 1400\*650\*750  
SQU-WTB-A2-1534 1500\*700\*750  
SQU-WTB-A2-1637 1600\*750\*750



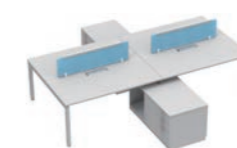
SQU-WTB-A2-1230 1200\*600\*750  
SQU-WTB-A2-1431 1400\*650\*750  
SQU-WTB-A2-1534 1500\*700\*750  
SQU-WTB-A2-1637 1600\*750\*750



SQU-WTD-A2-1212 1200\*600\*750  
SQU-WTD-A2-1413 1400\*650\*750  
SQU-WTD-A2-1414 1400\*700\*750  
SQU-WTD-A2-1514 1500\*700\*750  
SQU-WTD-A2-1615 1600\*750\*750



SQU-WTF-A4-2813 1200\*600\*750  
SQU-WTF-A4-2814 1400\*650\*750  
SQU-WTF-A4-3014 1500\*700\*750  
SQU-WTF-A4-3215 1600\*750\*750



SQU-WTG-A4-2828 1200\*600\*750  
SQU-WTG-A4-2829 1400\*650\*750  
SQU-WTG-A4-3029 1500\*700\*750  
SQU-WTG-A4-3230 1600\*750\*750

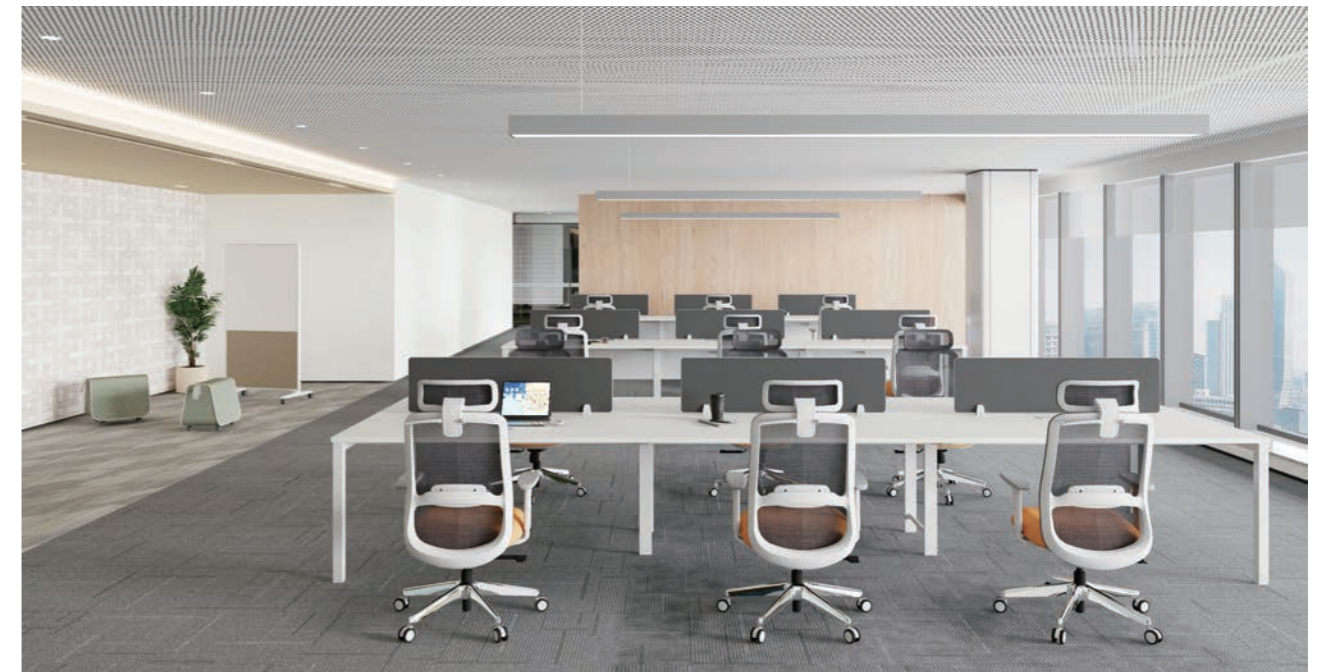


SQU-WTH-A3-2124 1100/550\*1100/550  
SQU-WTH-A3-2327 1200/600\*1200/600



SQU-WTH-A6-4224 1100/550\*1100/550  
SQU-WTH-A6-4626 1200/600\*1200/600

# LIKE WORKSTATION



LIK-WTC-A1-1206 1200\*600\*750  
LIK-WTC-A1-1406 1400\*650\*750  
LIK-WTC-A1-1407 1400\*700\*750  
LIK-WTC-A1-1507 1500\*700\*750  
LIK-WTC-A1-1607 1600\*750\*750



LIK-WTC-A2-2406 1200\*600\*750  
LIK-WTC-A2-2806 1400\*650\*750  
LIK-WTC-A2-2807 1400\*700\*750  
LIK-WTC-A2-3007 1500\*700\*750  
LIK-WTC-A2-3207 1600\*750\*750



LIK-WTC-Y1-1206 1200\*600\*750  
LIK-WTC-Y1-1406 1400\*650\*750  
LIK-WTC-Y1-1407 1400\*700\*750  
LIK-WTC-Y1-1507 1500\*700\*750  
LIK-WTC-Y1-1607 1600\*750\*750



LIK-WTC-B1-1206  
1200\*600\*750



LIK-WTC-B2-2406  
1200\*600\*750



LIK-WTC-BY1-1206  
1200\*600\*750



LIK-WTA-B2-1212  
1200\*1200\*750



LIK-WTA-B4-2412  
1200\*1200\*750



LIK-WTA-BY2-1212  
1200\*1200\*750



LIK-WTA-A2-1212 1200\*1200\*750  
LIK-WTA-A2-1413 1400\*1300\*750  
LIK-WTA-A2-1414 1400\*1400\*750  
LIK-WTA-A2-1514 1500\*1400\*750  
LIK-WTA-A2-1615 1600\*1500\*750



LIK-WTA-A4-2412 1200\*1200\*750  
LIK-WTA-A4-2813 1400\*1300\*750  
LIK-WTA-A4-2814 1400\*1400\*750  
LIK-WTA-A4-3014 1500\*1400\*750  
LIK-WTA-A4-3215 1600\*1500\*750



LIK-WTA-Y2-1212 1200\*600\*750  
LIK-WTA-Y2-1413 1400\*1300\*750  
LIK-WTA-Y2-1414 1400\*1400\*750  
LIK-WTA-Y2-1514 1500\*1400\*750  
LIK-WTA-Y2-1615 1600\*1500\*750

# ENJOY WORKSTATION

Enjoy it series breaks the strict planning grid of office space, and at the same time meet the coordination between the work environment and the demand of enterprise personnel, create a flexible working space.

The DA administrative space is designed with a semi-open and high-partition style to create a relatively independent working environment for managers, free from outside interference. When collaborative discussion, the open negotiation space next to it comes in handy.



**ENJ-WTA-A1**  
1490W × 760D × 1200H  
1590W × 810D × 1200H  
1690W × 860D × 1200H



**ENJ-WTA-A2**  
2890W × 760D × 1200H  
3090W × 810D × 1200H  
3290W × 860D × 1200H



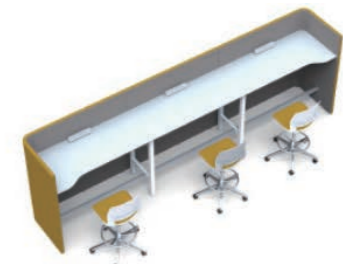
**ENJ-WTA-A3**  
4290W × 760D × 1200H  
4590W × 810D × 1200H  
4890W × 860D × 1200H



**ENJ-WTA-HA1**  
1490W × 760D × 1380H  
1590W × 810D × 1380H  
1690W × 860D × 1380H



**ENJ-WTA-HA2**  
2890W × 760D × 1380H  
3090W × 810D × 1380H  
3290W × 860D × 1380H



**ENJ-WTA-HA3**  
4290W × 760D × 1380H  
4590W × 810D × 1380H  
4890W × 860D × 1380H



**ENJ-WTB-A2**  
1890W × 1490D × 1200H  
1990W × 1590D × 1200H  
2090W × 1690D × 1200H



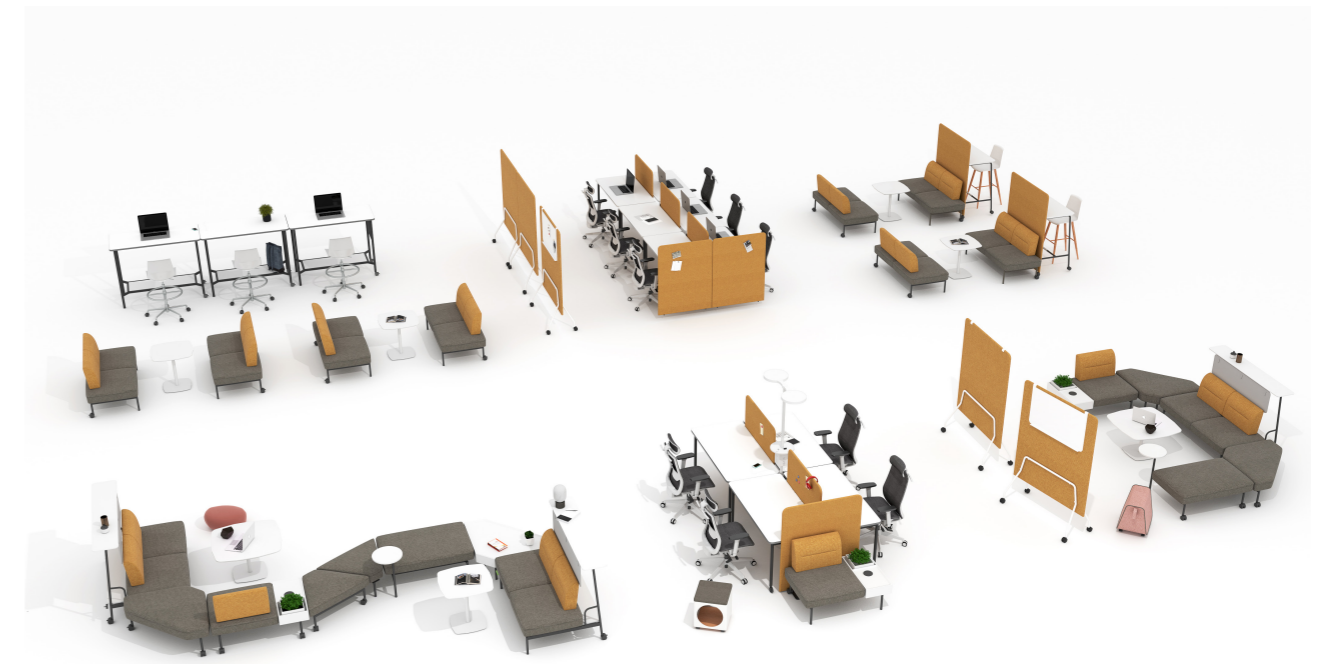
**ENJ-WTB-A4**  
3090W × 1490D × 1200H  
3290W × 1590D × 1200H  
3490W × 1690D × 1200H



**ENJ-WTB-A6**  
4590W × 1490D × 1200H  
4890W × 1590D × 1200H  
5190W × 1690D × 1200H

# LINK WORKSTATION

LINK workstations reshape modern office Spaces with technological power, infusing flexibility and convenience into team collaboration. It breaks the limitations of traditional office scenarios, allowing cross-departmental communication and brainstorming to no longer be constrained by physical space. It can also ignite creative inspiration in efficient interaction, helping teams turn their ingenious ideas into practical results. As a concrete extension of the LINK concept, Lingke's product line is rich, diverse and comprehensive - from workstations suitable for focused office work, screens that ensure private communication, sofas that create a comfortable and relaxing atmosphere, to lamps that optimize the light and shadow of the space, covering every need in the office scene in all aspects. Its core modular design endows the space with unlimited possibilities for combination: it can be freely matched according to the team size, office mode, and functional requirements. Whether it is to create an open collaboration area or to build an independent and focused space, it can be flexibly adapted, making the office environment truly serve people's needs.



## FROG

The design of the "w" shape is borrowed from the shape of the frog's legs: full of strength, but simple and elegant. The lumbar support and material texture of the lower part of the seat use a black high-gloss treatment, and a custom design U-shaped lumbar support piece. When the chair is leaned back, this piece creates a certain amount of rebound; it fits the waist and effectively relieves the waist tension.



## OLDY

Modern office spaces always need simple and practical chairs to create flexibility in the overall space function that planning simply can not cover. This range of qualified office chairs in different color combinations is a simple and effective solution. They are easily integrated into a variety of office environments. Convenient, easy on the eyes and practical, this chair series has a somewhat generous character to it.



# ATOM

The overall working line is smooth, generous and stable. its appearance exudes an agile temperament, with a strong sense of technology and fashion. it is irresistible, by all means.



# ATOM II

The overhead chair adjusts the right front end of the switch seat surface, which can easily touch the switch and is convenient to use. The three adjustment keys of the seat are also set on the right side, and the switch is located on the right side of the armrest. According to the habit of people using the right hand, the control key can be adjusted by moving up and down, which makes the operation more convenient and easy to lean back/lift.



## Y CHAIR

The top of the back of the Y chair adopts a flanged design to achieve a perfect mesh wrap with arc plastic parts embedded inside the back frame, making it more comfortable to lean on. The adjustable lumbar support fits the muscles and supports the spine. PU soft material wrapped plastic, double material more beautiful, exquisite and comfortable



## Y CHAIR II

The top of the back of the Y chair adopts a flanged design to achieve a perfect mesh wrap with arc plastic parts embedded inside the back frame, making it more comfortable to lean on. The adjustable lumbar support fits the muscles and supports the spine. PU soft material wrapped plastic, double material more beautiful, exquisite and comfortable



# SENIOR

Senior is ergonomically designed. The wide, three-dimensional and full one-piece headrest arc can perfectly conform to the human body curve and provide perfect support for all parts of the body. The exquisite stitching craftsmanship is unique and of high quality. The thickened and soft seat cushion offers you a truly healthy and comfortable sitting posture. It adopts a low center of gravity design, providing a panoramic view. Compared with the traditional high-back throne, Senior uses a "sunken wraparound sitting posture", allowing the user to naturally be in a position of "looking down but not being distant", maintaining both dignity and friendliness.



# CALM

Calm, taking the 1939 British wartime poster "KeepCalm and Carry On" as its value intention, integrates classic and modern elements. This series is made of specially tuned matte black leather, which corresponds to the Old English word "Culm" meaning "charcoal black sediment deposited at the bottom of the valley". The neat straight lines and slightly curved backrest symbolize the balance between rational restraint (KeepCalm) and inner resilience (Carry On). The backrest is like a steady shield, and the armrests are like a stable shore, allowing the user to become the "calm helmsman" of their own life.



## NEWCA

The NEWCA chair adopts curves of different curvature to form a curved double-back design that fits the human body better. Adjustable waist support, delicate and beautiful waist support operation handle using the "O" element to make full use of the elastic properties of the net fabric through the plastic piece to the top of the net fabric. The force pushes the net forward and tautens it to support the waist.



## SEER

Seer chair double back frame double waist support design, can be telescoped before and after, four speed adjustment of different heights, to meet the needs of different users. Double back frame double waist support design, can be telescoped before and after, four speed adjustment of different heights, to meet the needs of different users.





# TABLE SCREEN

Diverse table system design can solve individual working demand and improve the communication relation between people. Mobile screen can make employees design their own working space based on the work that they can easily remove the screen to develop cooperation or remove the screen to any working table to create private space.



Snow Rifle Table Screen



Berg Glass Table Screen



Diamond Movable Table Screen



Pano Sound-Absorbing Panel Screen



Berg Wooden Tray



Berg Fabric Table Screen



Rifle Movable Table Screen

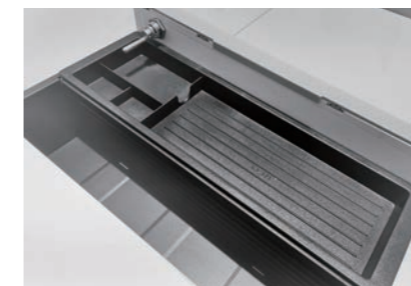


Wiring system provides integrated technical support for working space. The internal and external cable plan makes data processing and power wiring inside the working space simpler which can provide the perfect performance that the table can be used while inserting.

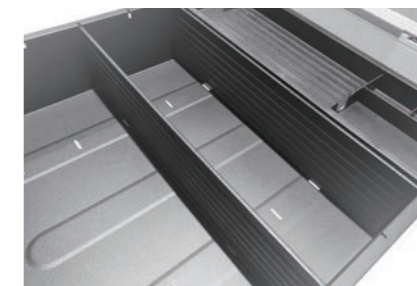


## UNA STEEL CABINET

Compact and flexible, it is the elves of office environment. The details of the design have great originality. Combination of various specifications can create your own free space expressly. Multi-functional storage according to requirements. The design of Safety lock ensure that your personal data safely. Handle with red, orange, blue, green and black five colors.



Pencil case



Compartment design



Slot design which is used to receive confidential files and help to keep files safe when user leave.



Non-dumping interlocking drawer, safe and thoughtful.



The fifth wheel set at the bottom drawer, stable and convenient.



The mobile wheel has the brake apparatus easy and carefree.

# UTA STEEL CABINET

Focus on storage function, rich product models and combination collocation provides powerful storage. A variety of design and handle to create a different space for you to experience. Use first-class high-quality steel, drawer all three guideway design, through repeated testing, in line with international standards. The back of the cabinet is made of a whole sheet of steel plate. Smooth and beautiful; Surface electrostatic powder spraying, environmental non-toxic odorless, bright and smooth; Reasonable structure, accurate location, well made.



## FRANK STEEL CABINET

FRANK, your office assistant.

Can simply planning out the free storage space in office environment, for the pursuit of fashion and advocating efficient office people, frank will be your best choice.

Exquisite appearance and design details enhance the sense of the level of office space also reflects the excellent quality. The whole layer of slide, storage Conveniently, good plasticity all your best choice in office.



## HENNA STEEL CABINET

HENNA cabinets, full steel and the surface is painted by electrostatic spraying. A variety of specifications according to your storage needs and selection, include 4 door, 6 door, 8 door, 10 door, 12 door, just for convenient your store and life.

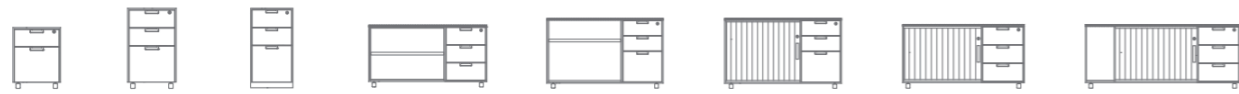


## WIT STEEL CABINET

WIT steel cabinet use the artificial intelligence design of face recognition, advanced biometrics technology for security management, make office storage more flexible, easy unlock, work at ease. The top of cabinet can choose to match flowers tray and plants can be able to place green plant ornament, let the space more comfortable.



# UNA



UNA-HB UNA-HA UNA-HC UNA-FA0905 UNA-FA1105 UNA-FA0906 UNA-FA1106 UNA-FB0906 UNA-FB1106 UNA-FB0905 UNA-FB1105 UNA-FC1405

# UTA



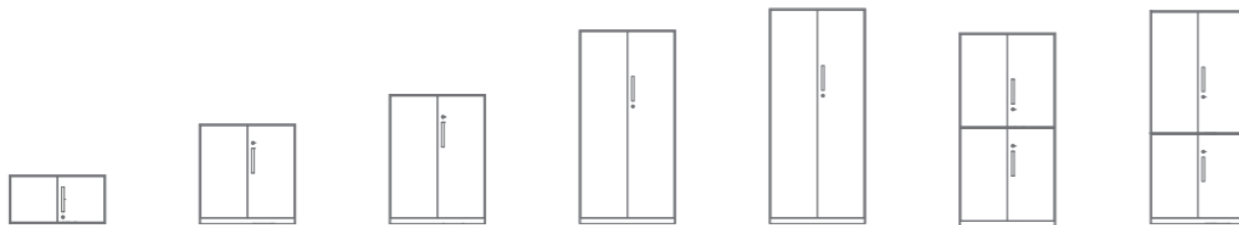
UTA-HB UTA-HA UTA-HC UTA-FA0905 UTA-FA1105 UTA-FA0906 UTA-FA1106 UTA-FB0906 UTA-FB1106 UTA-FB0905 UTA-FB1105 UTA-FC1405



UTA-ZA0707 UTA-ZA0807 UTA-ZA0907 UTA-ZB0707 UTA-ZB0807 UTA-ZB0907 UTA-ZC0707 UTA-ZC0807 UTA-ZC0907 UTA-ZE UTA-ZD1311 UTA-ZD1312 UTA-ZD1411 UTA-ZD1412 UTA-ZD1511 UTA-ZD1512 UTA-ZF1311 UTA-ZF1312 UTA-ZF1411 UTA-ZF1412 UTA-ZF1511 UTA-ZF1512



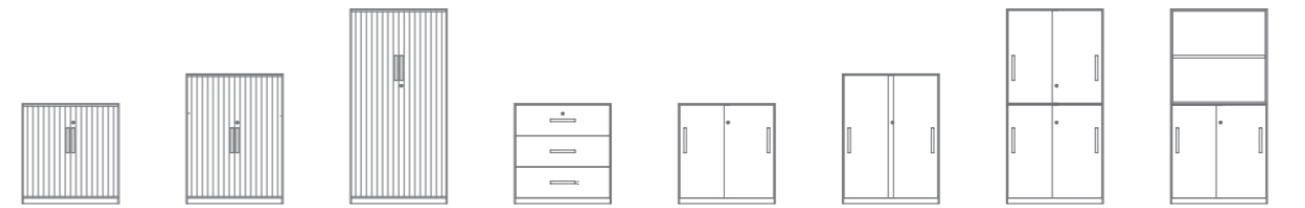
UTA-MA1805 UTA-MA2005 UTA-MB1805 UTA-MB2005 UTA-MC1805 UTA-MC2005 UTA-MD0707 UTA-MF0707



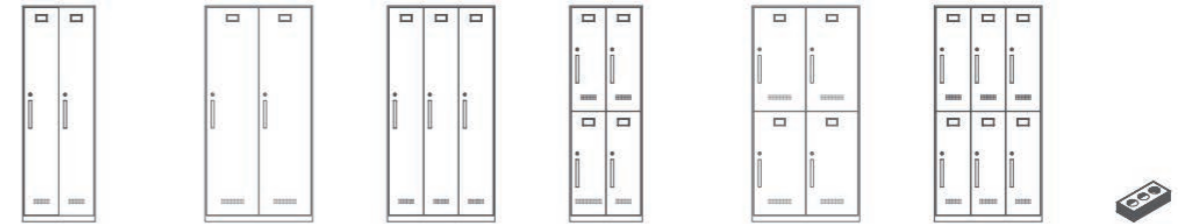
UTA-WA0904 UTA-WA0809 UTA-WA0909 UTA-WA0812 UTA-WA0912 UTA-FA0906 UTA-FA1106 UTA-WA0918 UTA-WA0920 UTA-WB0918



UTA-WC0809 UTA-WC0909 UTA-WC0812 UTA-WC0912 UTA-WC0918 UTA-WC0920 UTA-WD0809 UTA-WD0909 UTA-WD0812 UTA-WD0912 UTA-WD0918 UTA-WD0920



UTA-WG0809 UTA-WG0909 UTA-WG0812 UTA-WG0912 UTA-WG0918 UTA-WM0812 UTA-WM0912 UTA-WE0809 UTA-WE0909 UTA-WE0812 UTA-WE0912 UTA-WE0918 UTA-WF0918



UTA-YA0618 UTA-YC0818 UTA-YC0918 UTA-YA0918 UTA-YB0618 UTA-YD0818 UTA-YD0918 UTA-YB0918 UTA-TY0802 UTA-TY0902

# FRANK



FRA-HB2 FRA-HA2 FRA-HC2 FRA-HB1 FRA-HB3 FRA-HB5 FRA-HA1 FRA-HA3 FRA-HA5 FRA-HC1 FRA-HC3 FRA-HC5

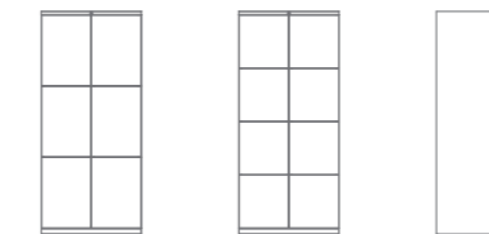
# HENNA



HEN-CC0809 HEN-CC0909 HEN-CB0909 HEN-CD0818 HEN-CD0918 HEN-CE0818 HEN-CE0918 HEN-CF0818 HEN-CF0918 HEN-CA0918 HEN-CG0818 HEN-CG0918

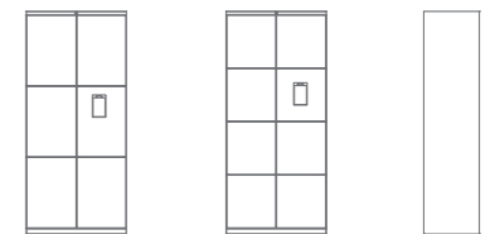
# WIT

Wechat scan code smart steel cabinet

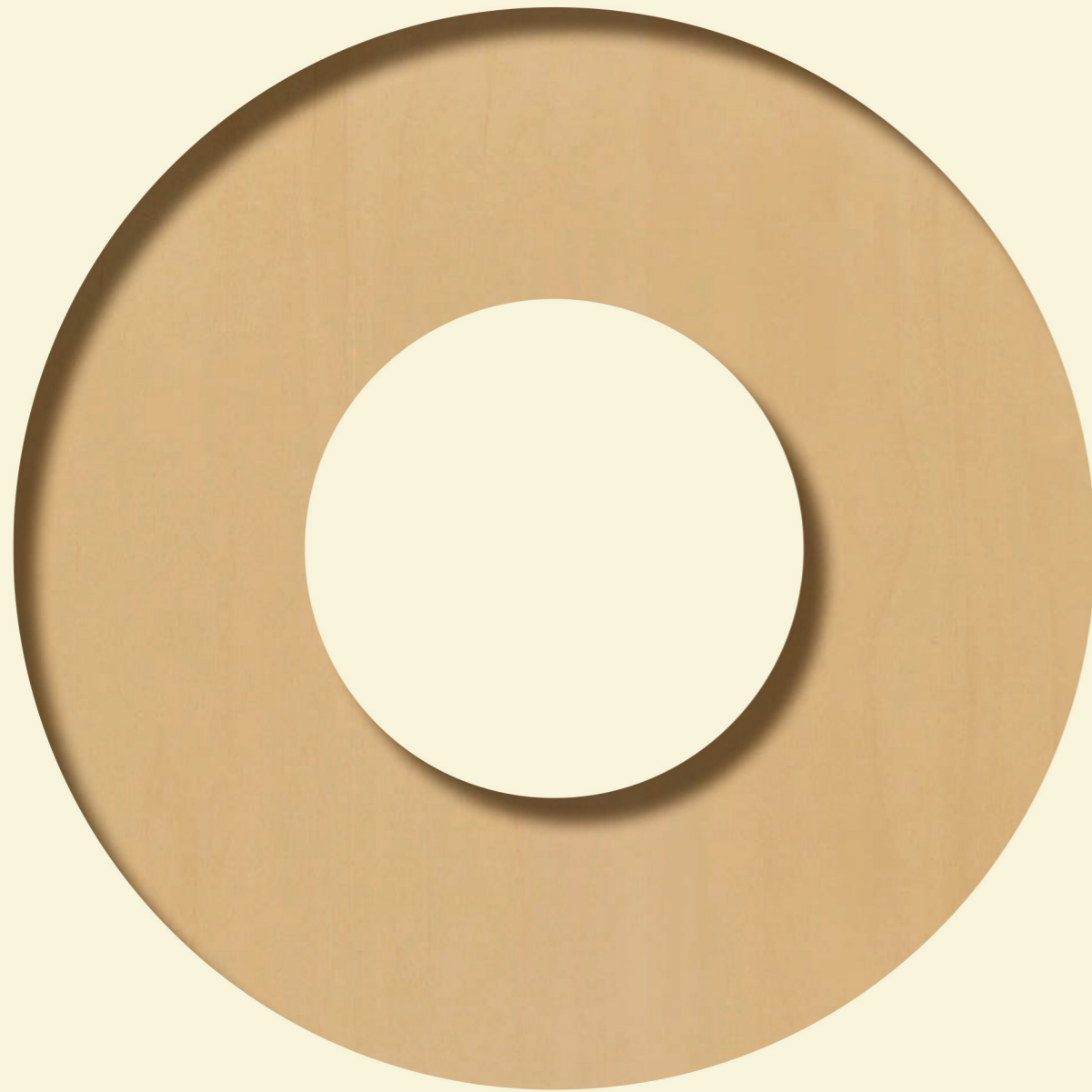


WIT-CAA0920 WIT-CAB0920 Side baffle

Face recognition intelligent steel cabinet



WIT-CBA0920 WIT-CBB0920 Side baffle



# *Meeting Space*

CHELSEA	139
CALDER	141
DESCHAMPS	142
MOUNTAIN	143
BRIDGE	145
KALER	147
LANDY II	149
BOKLEIS	150
RIFLE	151
GLEN	152
DIAMOND	153
DALE	154
LIKE	155
SNOW	156
KENT	157
DARLINGTON	158
AGILE	159
AISI	160
LORA	161
KART	162
ATTLEYA	163
ALVIN	164
LEEDS	165
READING	166
JAMIE	167
LECTURE TABLE	168

# CHELSEA CONFERENCE TABLE

Chelsea is a beautiful and affluent city located in the west of London, England.

Nestled on the northern bank of the River Thames,

Chelsea is renowned for its fashion, trendiness, and upscale atmosphere.

It is also a favored residence for many notable individuals.

Inspired by the affluent city of chelsea, this conference table product is crafted to provide

users with an exquisite meeting space.Utilizing a concealed and under-table wiring solution,

this conference table maintains its integrity and aesthetic appeal while fulfilling electrical needs.



Chl-T4818A



Chl-T4818B



Chl-T4818C



Chl-T5418A



Chl-T5418B



Chl-T5418C



Chl-T6622A



Chl-T6622B



Chl-T6622C



Chl-T7222A



Chl-T7222B



Chl-T7222C



Chl-T8024A



Chl-T8024B



Chl-T8024C

## CALDER CONFERENCE TABLE

Alexander Calder is renowned for his uniquely styled "mobiles" and "stabiles" which have established his fame worldwide.

His sculptures, while appearing static, embody the concept of movement. What one senses in these "stabiles" is a world of motion.

The design inspiration for the Calder conference table stems from the sculptures of Alexander Calder. The geometric cuts of the table legs echo aesthetic principles, while the perfect combination of dynamic movement and structural form gives the product a rich sense of layering and visual impact. The use of multiple materials in the combined design further enhances these qualities.



## DESCHAMPS CONFERENCE TABLE

Deschamps, which means noble moral character.

The Deschamps conference table boasts a unique design that is both sleek and elegant, yet also imbued with a sense of spirit and vitality. Sturdy and durable, the Deschamps conference table exudes a sense of stability and poise, combining understated elegance with luxurious finesse. Its smooth and beautiful texture provides a unique visual experience that sets it apart.

Easily adaptable to various styles, its minimalistic design is tailored specifically for high-end individuals.



# MOUNTAIN CONFERENCE TABLE

The Mountain conference table is finished with a sealed lacquer, ensuring a smooth and lustrous surface with a uniform color.

It authentically preserves the natural grain of the wood, adding a touch of organic elegance and minimizing industrial traces, thus highlighting sophistication and good taste.

It perfectly showcases the intellect and sophistication of the user, crafted with exquisite craftsmanship that embodies both luxury and elegance.



# BRIDGE CONFERENCE TABLE

The Mountain conference table is finished with a sealed lacquer, ensuring a smooth and lustrous surface with a uniform color. It authentically preserves the natural grain of the wood, adding a touch of organic elegance and minimizing industrial traces, thus highlighting sophistication and good taste. It perfectly showcases the intellect and sophistication of the user, crafted with exquisite craftsmanship that embodies both luxury and elegance.





## KALER CONFERENCE TABLE

The conference table is based on the square and regular modeling, bringing Kaler's solemn character into view. Delicate aluminum alloy wire cover and the leather pad in the both sides, add some jumpy to the originally calm keynote



## LANDY II CONFERENCE TABLE

The Landy II conference table continues the advantages of the first-generation product and optimizes the design based on its unique features.

Both ends are equipped with super-fiber leather pads, which are tear-resistant, scratch-resistant, possess excellent physical properties, demonstrate strong anti-contamination capabilities, and are easy to maintain.

The center is equipped with a wireless charging adjustable socket and a black painted tempered glass adding to the highlights of the Landy conference table series.



## BOKLEIS CONFERENCE TABLE

Bokleis Conference Table's arrogance is exposed, not only because of its square and grand modeling, but its powerful multimedia conference system.

It is widely used in videoconference, financial analysis system, etc. Its function modules includes: elevator displays, elevator projectors multifunctional information box, electric projection screen, and the its main function are subtitle display, system self-check report, seating arrangement, buttons to register, application to speak, speaking in order, brainstorming photography tracking, automatic recording, etc.



# RIFLE

## CONFERENCE TABLE

Black walnut wood panel is natural and austere, filling in the blank of the cement wall in building decoration. Collocation with the element of white color causes a contrast in color vividly. And the Auburn red color in steel legs activates the hidden passion in Rifle, also adds vitality and dynamic power to the basic of calmness in the space.

The cabinet with writing function can slide, coupling with the conference table, which meets the need to display the content to discuss. It strengthens the function of the cabinet, bringing the atmosphere of learning to the dull and dumb meeting room as well.



# GLEN

## CONFERENCE TABLE

Under the comfortable atmosphere of negotiation created by Glen, we can talk freely and freely. With the comfortable table, we can enjoy the negotiation.

From side leg to wire middle leg, every angle is emitting a natural atmosphere, full of tension edge leg design. Stable and full of beauty, fashion and do not lose solemn.



## DIAMOND CONFERENCE TABLE

Diamond conference table interprets modern business aesthetics with craftsmanship. The foot of the table created by the extreme Yang oxidation black process presents a cold and deep metallic texture.

The surface treated with special oxidation not only has excellent wear resistance, but also outlines a strong geometric outline in the flow of light and shadow. The countertop selection of classic matte gold pomelo wood, natural wood grain and matte champagne gold color blend, not only retains the warm and elegant wood, but also gives the space low-key luxury visual level.



## DALE CONFERENCE TABLE

Dell conference table with smooth geometric lines and modular structure as the core, to build both functional and artistic meeting scene.

The open layout ADAPTS to flexible space combination, which can be freely extended or closed according to demand. Its restrained and tension-rich design language not only meets the practical demands of efficient collaboration, but also inspires creative inspiration with clever spatial narrative, redefining the interactive experience of modern business meetings.



## LIKE CONFERENCE TABLE

Like conference table reshapes the modern office scene with minimalist aesthetics, and its square and crisp geometric modeling accurately interprets the sense of order in business space. The table body adopts the thickened environmentally friendly plate and strengthened metal frame structure, abandoning the linear design of redundant decoration, which not only meets the efficient demand of small and medium-sized meeting rooms for space utilization, but also expands the functional boundary with modular combination. In the balance of rational aesthetics and pragmatism, this conference table with industrial durability and affordable, for enterprises to create efficient collaboration space, but also to achieve long-term investment value, so that every cent of the budget is worth more.



## SNOW CONFERENCE TABLE

Snow conference table reconstructs the style of business space with minimalist aesthetics, crisp straight lines and smooth surfaces intertwine geometric rhythm beauty. Whether it is creative brainstorming or transnational video conferencing, this conference table with rational order and poetic expression can sublimate the sense of business ceremony to the realm of art with a low-key but not negligible presence.



# KENT CONFERENCE TABLE

Kent Conference Table epitomizes the fusion of British industrial aesthetics and Eastern minimalism. Anchored by three core design principles – invisible engineering structures, modular power integration, and scenario-adaptive configurations – it exemplifies professional rigor for premium business environments.

The design draws inspiration from modern industrial aesthetics, emphasizing structural simplicity and functionality. It features a seamless steel-wood inlay structure, with golden ratio-proportioned metal legs and wooden cylindrical elements that visually reduce weight, achieving a balance of aesthetic harmony and a light yet stable visual effect. The desktop is equipped with an embedded power rail socket, maintaining a clean and organized surface while delivering full electrical readiness for meetings.



# DARLINGTON CONFERENCE TABLE

The Darlington Conference Table draws inspiration from the natural form of water droplets, featuring a sleek and natural design that embodies both dynamic beauty and balance. It creates a visually simple, soft, and comfortable ambiance. The water droplet-shaped tabletop ingeniously avoids obstructing views during video conferences. With its smart lifting design, it supports seamless transitions between standing and sitting, promoting flexible and healthy office work styles. Equipped with a power track socket, it maintains the table's simple yet aesthetic appeal while meeting all power demand during meetings.



# AGILE TRAINING TABLE

Agile conference table, negotiation table are on the basis of Agile training table, still use aluminum leg design, change movable castor to fixed one, make sure desk is stable.

What's more, Agile conference table have enrich and extent U shape and square shape table, bring more production option for users.



# AISI TRAINING TABLE

Scientific design, after use, Ace training table can be folded and put away, saving space, at the same time, we consider the safety after folding, optimize the process structure, increase the anti-tipping safety system, to ensure ACE stable and not tipping after folding.



# LORA

## TRAINING CHAIR

The whole chair body has done four sections of folding techniques, and the turning point between the part of the back of the chair and the surface is about the height of the fourth section of the human spine to ensure comfort at the same time, more vitality and appreciation. After analysis, the tilt Angle of about 100 degrees is more suitable for the sitting posture of negotiations and meetings.



# KART

## TRAINING TABLE

The initial state is 108 degrees, comfortable leaning, 20 degrees of activity space, and the maximum tilt Angle is 124 to stretch your spine for a long time, not easy to tire, and concentrate on the meeting. The chair seat is turned up, and multiple chairs can be pushed and stacked side-by-side to improve space utilization, lightweight and convenient, easy to handle, comfortable office.



## CATTLEYA TRAINING CHAIR

The high-back bar chair gives more support to the back, making the seat feel comfortable and more relaxed. High quality paint steel feet, can be stacked up and down, saving space.



## ALVIN TRAINING TABLE

The initial state is 108 degrees, comfortable leaning, 20 degrees of activity space, and the maximum tilt Angle is 124 to stretch your spine for a long time, not easy to tire, and concentrate on the meeting. The chair seat is turned up, and multiple chairs can be pushed and stacked side-by-side to improve space utilization, lightweight and convenient, easy to handle, comfortable office.



## LEEDS

The Leeds Bar Table breathes life into small business discussion spaces with its unique design. The triangular tabletop, softened by rounded edges, is both stylish and safe, while the cylindrical legs lend a touch of minimalism and modernity.

This bar table isn't just adorable and versatile; it effortlessly livens up the atmosphere, creating a relaxed and vibrant setting for office or leisure gatherings. Whether it's nestled in a coffee corner, rest area, or creative workspace, the Leeds Bar Table becomes the highlight, sparking inspiration and conversation.



## READING

Inspired by the classic elegance of traditional round-backed armchairs, the Reading Lounge Chair embodies refined craftsmanship. Its smooth, flowing curves harmonize with sofa upholstery profiles while maintaining graceful lines. It is crafted with precision to ensure a perfect fit between the upholstery and the frame. The ergonomic arc connecting armrests to backrest delivers both visual appeal and exceptional comfort. Featuring lightweight metal legs paired with premium leather upholstery, this chair offers effortless mobility. The minimalist base and leg design provide enhanced stability. Blending timeless sophistication with contemporary aesthetics, this versatile seating solution adapts perfectly to diverse office environments.



# JAMIE TRAINING CHAIR

This training chair is comfortable to sit on, thanks to reasonable and accurate structural design, and cost-effective. Perfect for all types of training Spaces and training tables.



# LECTURE TABLE



Leader Lectern



Kenny Lectern



Jefferson Lectern



Mandela Lectern



# *Public Space*

YORK	171
NEIL	173
ISLAND	175
BATH	177
BOLTON	179
WINDSOR	181

# YORK LEISURE SOFA

The York Series System Modular Sofa redefines office environments with its innovative modular design, breaks free from spatial constraints through versatile form combinations, and offers flexible, efficient solutions for modern workplaces. Its iconic curved design elements flow through every detail, with rounded corners and plump upholstered forms creating an organic shape that resembles a fluid art installation, infusing warmth into the formal office atmosphere.

The designer cleverly employs a low-saturation color-blocking palette, blending the soothing tones of the Morandi color scheme with vibrant pops of color, creating a diverse color matrix that ignites team creativity.



# NEIL TABLE

We define Neil as dining table.

Whether it is used in restaurant, leisure area or negotiation area in the office or in the houses with children, the priority that we consider is to avoid the disadvantages of the ordinary plates, such as peeling off when meets water and easily to get moldy. So, in order to achieve the point mentioned above, after a lot of research, we have found a new material - PVC foam board.



# ISLAND

ISLAND redefines workplace philosophy by liberating work from conventional desk-bound routines, embracing dynamic flexibility. This compact, island-like workstation features versatile accessories that enable instant transition into productive mode. Its semi-enclosed design, specifically engineered for public spaces, creates an optimally shielded environment while maintaining spatial connectivity. Such design can effectively avoid external disturbances. The integrated multi-functional writing board offers multi-axis rotation, complemented by anti-slip grooves and reinforced metal edges – a thoughtful blend of aesthetic refinement and practical functionality. Strategically positioned power and data outlets are beneath the right armrest. They are paired with a concealed wireless charging pad in the left armrest to ensure seamless power accessibility.



# BATH

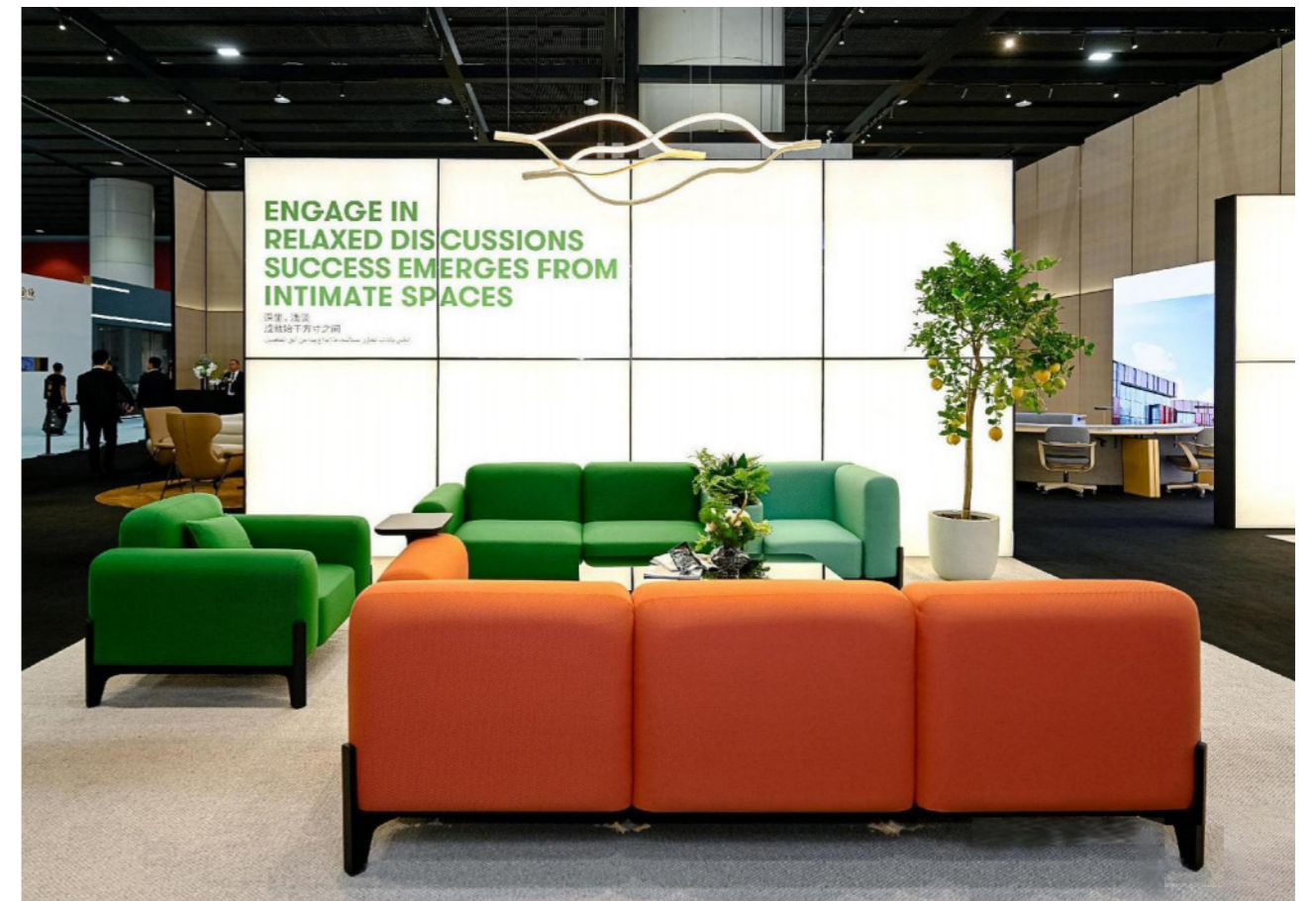
The Bath Leisure Sofa draws its inspiration from the round, plump clouds dotting the sky, designing a simplistic yet elegant upholstered shape. Crafted with upholstered curved wood panel techniques, it exudes a sense of luxurious and sophisticated vibe.

The product's dimensions are ergonomically designed, with the backrest and armrests adopting a curved shape to provide comfortable support for users' lumbar and spine, while enveloping the user in the cozy embrace of its rounded upholstery.



# BOLTON

The Bolton Sofa takes its cue from the organic forms found in geometric elements, featuring soft, flowing lines that mimic the gentle waves by the lakeside. Made from soft, breathable fabrics and filled with high-resilience foam, it blends modern style with arcs and minimalist design, embodying elegance, practicality, and beauty. In terms of form and composition, it adopts a modular functional design, with modules including planters, side tables, and basic sofa upholstery parts. This product aims to offer flexibility and diversity through modular design, catering to the diverse furniture needs of modern offices.



# WINDSOR

The design philosophy of the Windsor System Modular Sofa is rooted in an profound understanding of space and an unwavering pursuit of elegance and romance. The sofa employs a modular design, enabling flexible combinations and adjustments to cater to diverse spatial requirements. The curvature and tilt of the backrest have been meticulously crafted to align with ergonomic principles, ensuring a natural and comfortable sitting posture. By utilizing an S-shaped curvature combination, it creates an inviting space for business gatherings and discussions. The movable modular planter design infuses the communication setting with a touch of English garden charm, elevating the space's elegance and sophistication. Complemented by high tables, coffee tables, leisure chairs, and other products, it fulfills users' high-quality leisure and business discussion demands.

