

COLOR

SWATCHES

2024版

COLOR1 布

COLOR2 布·羊绒

皮·布·吸音板

医疗专用色·布·钢





2024版

目录 CONTENTS

02	COLOR 1 布
08	COLOR 2 布·羊绒
14	皮·布·吸音板
20	医疗专用色·布·钢

COLOR 1 布

HQ

HQ-01

HQ-05

HQ-06

HQ-12

HQ-14

HQ-17

FA-01

FA-02

FA-03

FA-04

FA-05

FA-06

FA-08

FA-09

FA-11

COLOR 1 布

FB

FB-02

FB-03

FB-05

FB-06

FB-07

FB-08

FB-09

FB-11

FB-12

FB-13

FB-14

FB-17

FB-18

FB-19

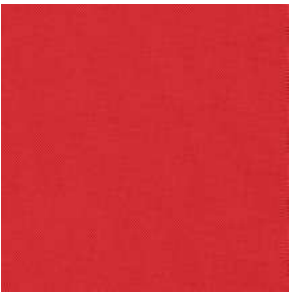
FB-20

COLOR 1 布

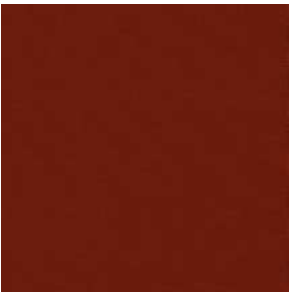
FB



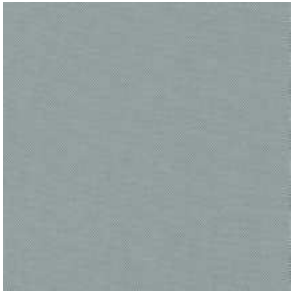
FB-21



FB-22



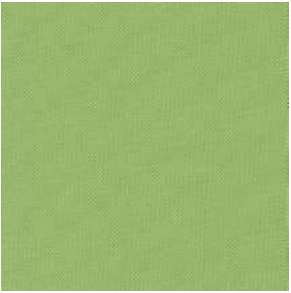
FB-23



FB-24



FB-25



FB-26



FB-27



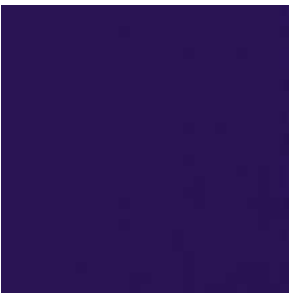
FB-28



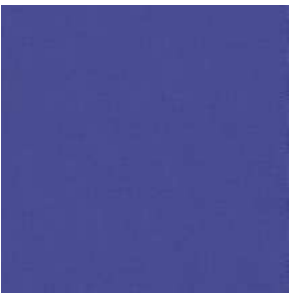
FB-29



FB-30



FB-31



FB-32



FB-33

色卡之颜色因批次不同略有差异，以现货为准。
The color might have slight variations on the goods received due to different batch production.

COLOR 1 布

FC



FC-01



FC-02



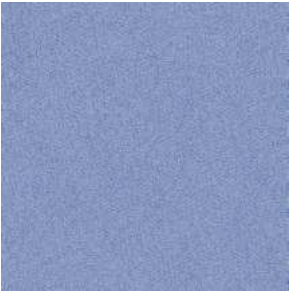
FC-04



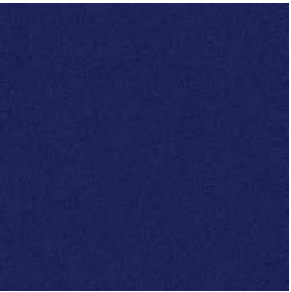
FC-05



FC-06



FC-07



FC-08



FC-10



FC-11



FC-12



FC-13



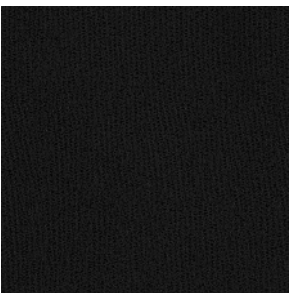
FC-17



FC-18



FC-20



FC-21

色卡之颜色因批次不同略有差异，以现货为准。
The color might have slight variations on the goods received due to different batch production.

FC

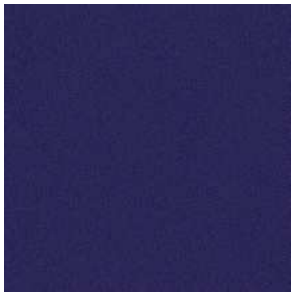
COLOR 1 布



FC-22



FC-23



FC-24



FC-25



FC-26



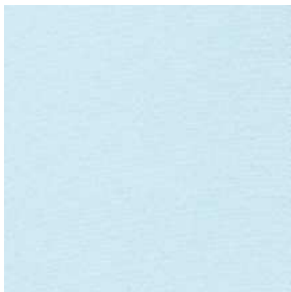
FC-27



FC-28



FC-29



FC-30



FC-31



FC-32



FC-34



FC-35



FC-36



FC-37

色卡之颜色因批次不同略有差异，以现货为准。
The color might have slight variations on the goods received due to different batch production.

COLOR 1 布

FC



FC-38



FC-39



FC-40



FC-41

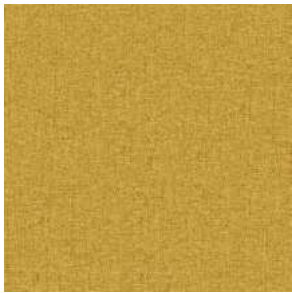
色卡之颜色因批次不同略有差异，以现货为准。
The color might have slight variations on the goods received due to different batch production.

COLOR 2 布·羊绒

FD



FD-06



FD-07



FD-09



FD-10



FD-11



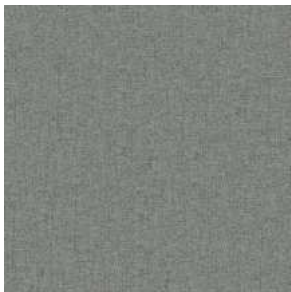
FD-12



FD-13



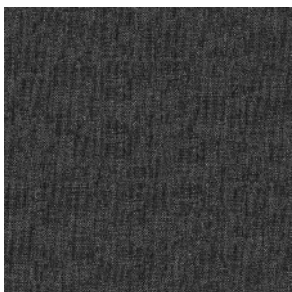
FD-14



FD-16



FD-17



FD-18



FD-19



FD-21



FD-22



FD-26

色卡之颜色因批次不同略有差异，以现货为准。
The color might have slight variations on the goods received due to different batch production.

COLOR 2 布·羊绒

FD



FD-27



FD-30



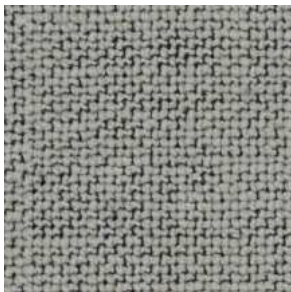
FD-33



FD-34



FI-05



FI-06



FI-07



FI-08

FI

色卡之颜色因批次不同略有差异，以现货为准。
The color might have slight variations on the goods received due to different batch production.

COLOR 2 布·羊绒

FK



FK-01



FK-02



FK-03



FK-04



FK-05



FK-06



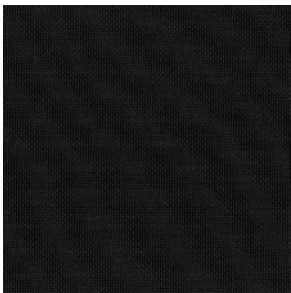
FK-09



FK-10



FK-11

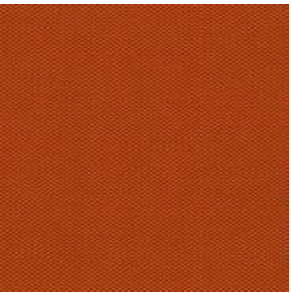


FK-14

色卡之颜色因批次不同略有差异，以现货为准。
The color might have slight variations on the goods received due to different batch production.

COLOR 2 布·羊绒

FL



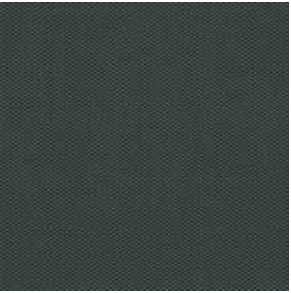
FL-07



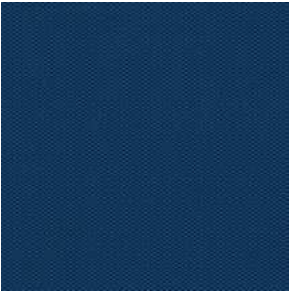
FL-08



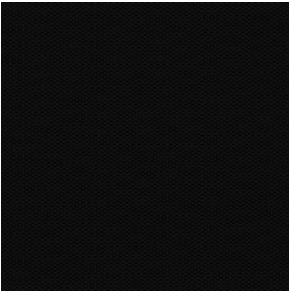
FL-09



FL-10



FL-11

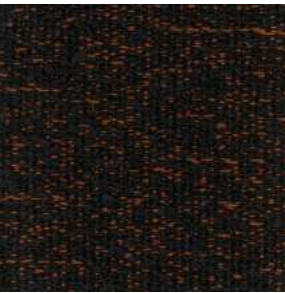


FL-12

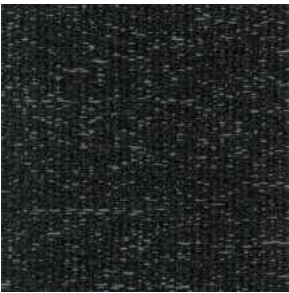
色卡之颜色因批次不同略有差异，以现货为准。
The color might have slight variations on the goods received due to different batch production.

COLOR 2 布·羊绒

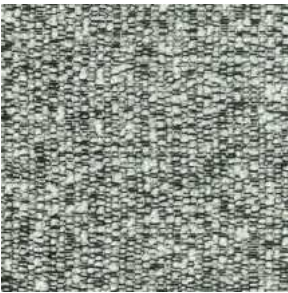
FS



FS-01



FS-02



FS-03



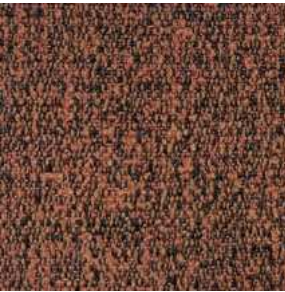
FS-04



FS-05



FS-06



FS-07



FS-08



FS-09



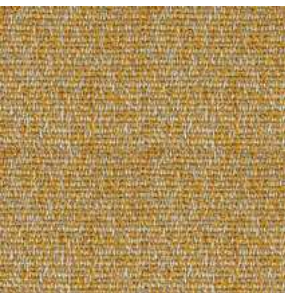
FS-10



FS-11



FS-12



FS-13



FS-14

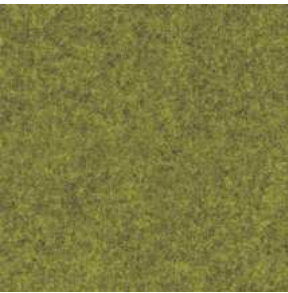


FS-15

色卡之颜色因批次不同略有差异，以现货为准。
The color might have slight variations on the goods received due to different batch production.

COLOR 2 布·羊绒

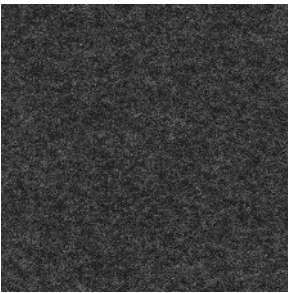
CB



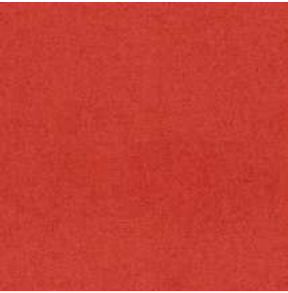
CB-02



CB-04



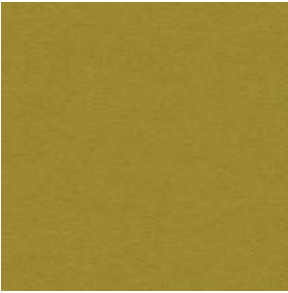
CB-05



CB-98



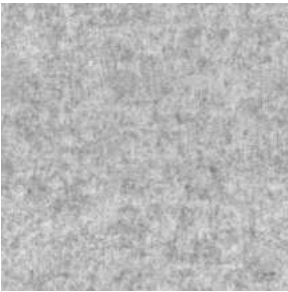
CB-100



CB-101



CB-103



CB-105



CB-117



CF-01



CF-02



CF-03

CF



CF-04



CF-05



CF-06

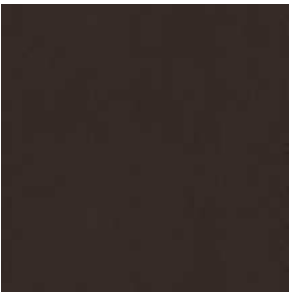
色卡之颜色因批次不同略有差异，以现货为准。
The color might have slight variations on the goods received due to different batch production.

皮·布·吸音板

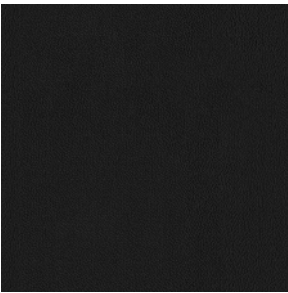
LA



LA-06 卡其灰

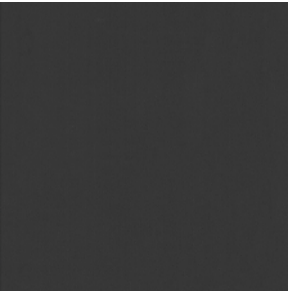


LA-08 海狸褐



LA-09 骑士黑

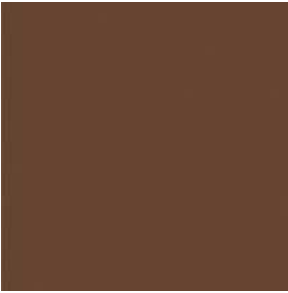
LB



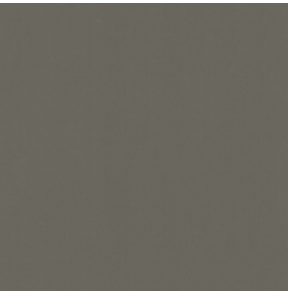
LB-31



LB-32



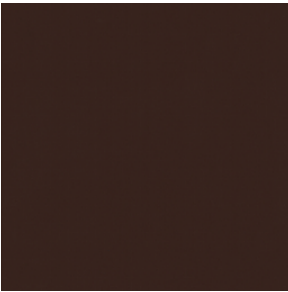
LB-33



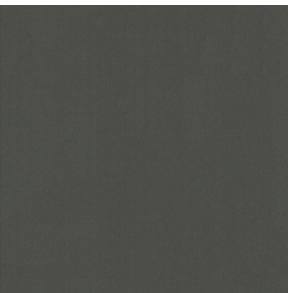
LB-34



LB-35



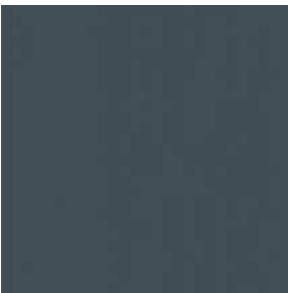
LB-36



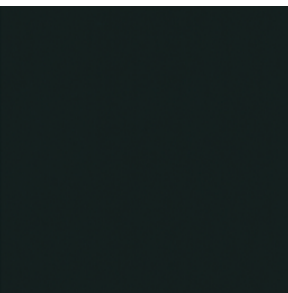
LB-37



LB-38



LB-39



LB-40

色卡之颜色因批次不同略有差异，以现货为准。
The color might have slight variations on the goods received due to different batch production.

皮·布·吸音板

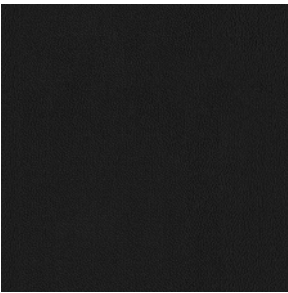
UA



UA-06 卡其灰



UA-08 海狸褐



UA-09 骑士黑

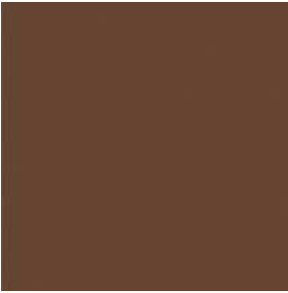
UB



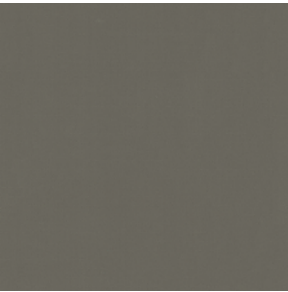
UB-31



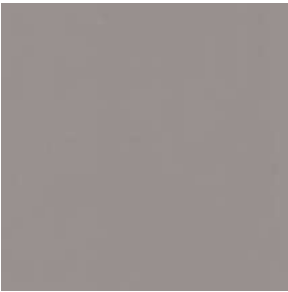
UB-32



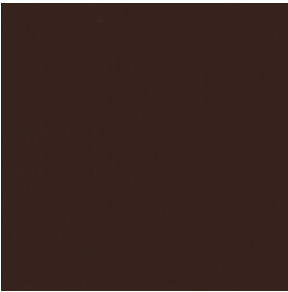
UB-33



UB-34



UB-35



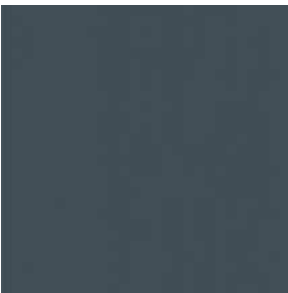
UB-36



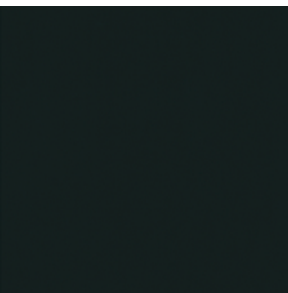
UB-37



UB-38



UB-39



UB-40

色卡之颜色因批次不同略有差异，以现货为准。
The color might have slight variations on the goods received due to different batch production.

皮·布·吸音板

PVC
PB



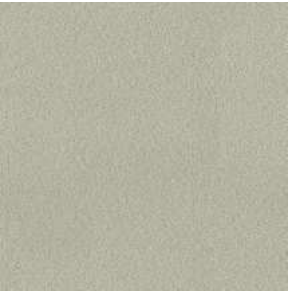
PB-01



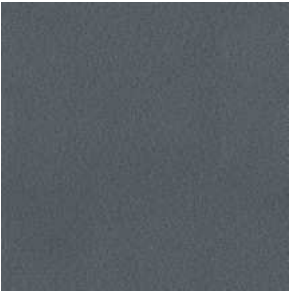
PB-02



PB-03



PB-04



PB-05

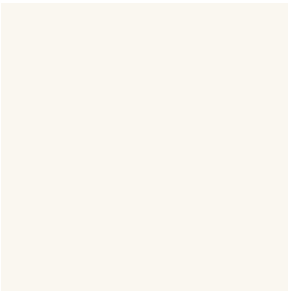
PVC
PC



PC-01



PC-02



PC-03



PC-04



PC-06

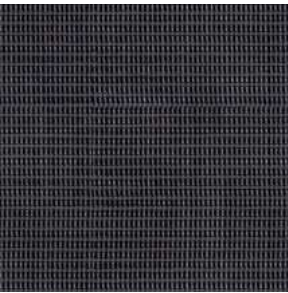


PC-07

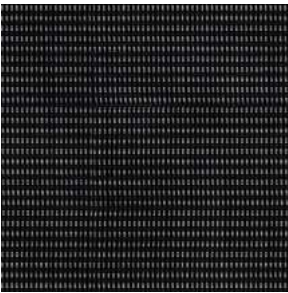
色卡之颜色因批次不同略有差异，以现货为准。
The color might have slight variations on the goods received due to different batch production.

皮·布·吸音板

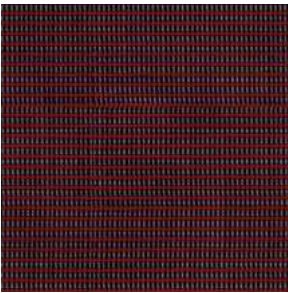
ME



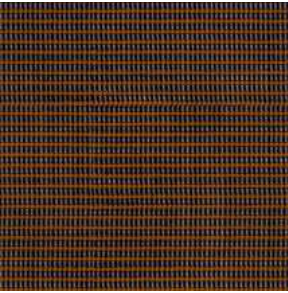
ME-01



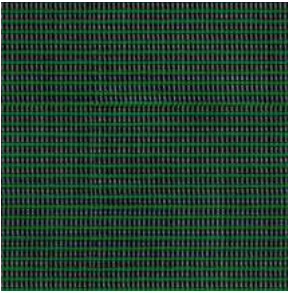
ME-02



ME-03



ME-04

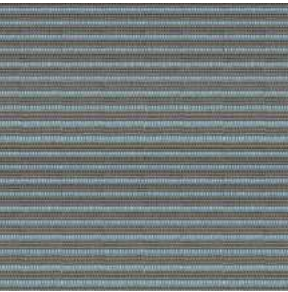


ME-05

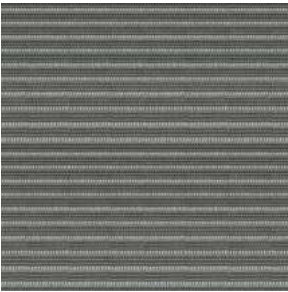


ME-06

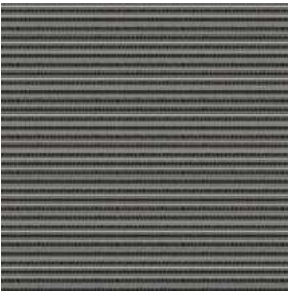
MH



MH-01



MH-04

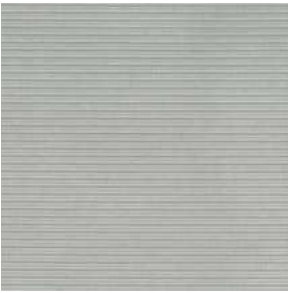


MH-05

MI



MI-01



MI-02



MI-03

色卡之颜色因批次不同略有差异，以现货为准。
The color might have slight variations on the goods received due to different batch production.

皮·布·吸音板

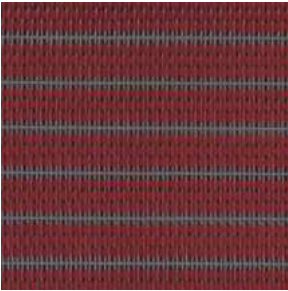
MT



MT-01



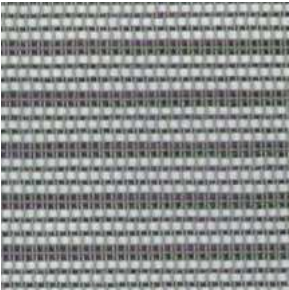
MT-02



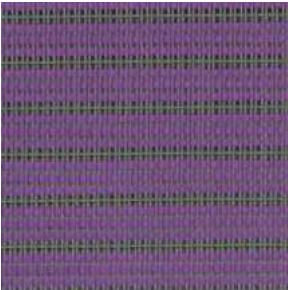
MT-03



MT-04

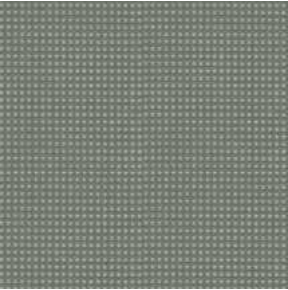


MT-05

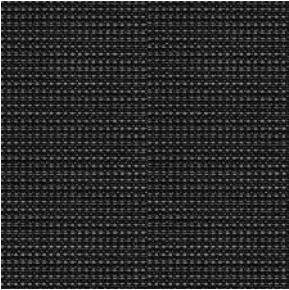


MT-06

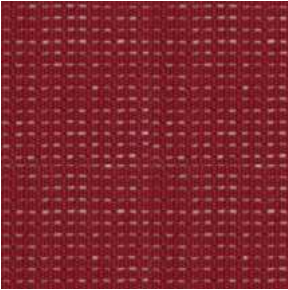
MU



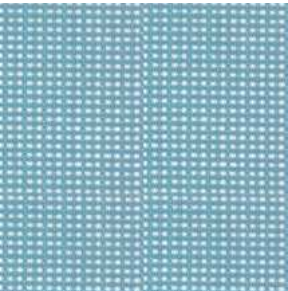
MU-01



MU-02



MU-03



MU-04



MU-05

皮·布·吸音板

BZ



BZ-03 芝麻黑



BZ-08 大红



BZ-11 银灰



BZ-14 浅蓝



BZ-25 天蓝



BZ-43 果绿



BZ-44 核桃色

UC

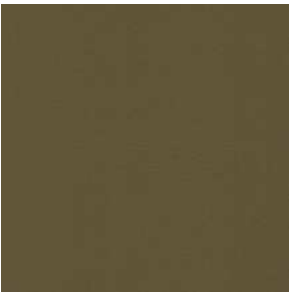
医疗专用色·布·钢



UC-06 薏仁米



UC-07 烟云灰

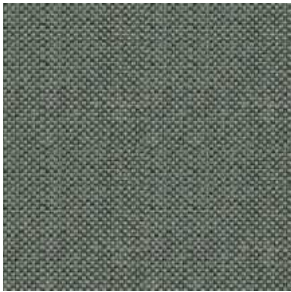


UC-08 米兰栗

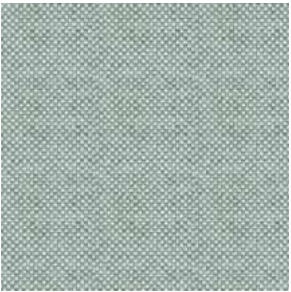


UC-09

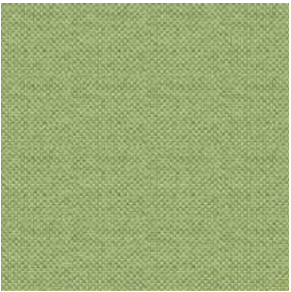
UD



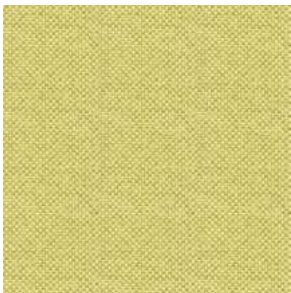
UD-01



UD-02



UD-03



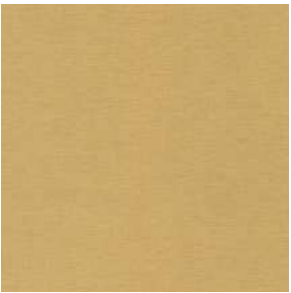
UD-04

UE

医疗专用色·布·钢



UE-01



UE-02



UE-03



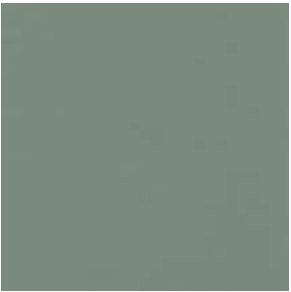
UE-04



UL-01



UL-02



UL-03



UL-04

FH



FH-02



FH-03



FH-04



FH-05



FH-06



FH-07



FH-08



FH-09



FH-10



FH-11



FH-12



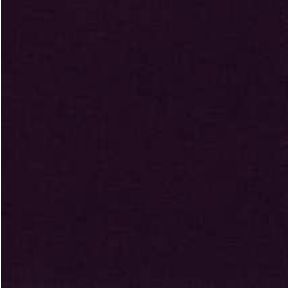
FH-13



FH-14



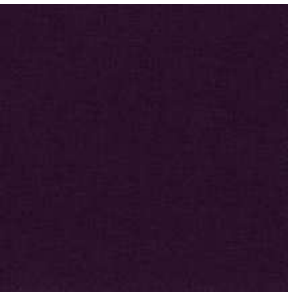
FH-15



FH-16

色卡之颜色因批次不同略有差异，以现货为准。
The color might have slight variations on the goods received due to different batch production.

FH



FH-17



FH-18



FH-19



FH-20



FH-21



FH-22



FH-23



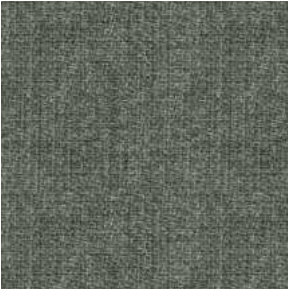
FH-24



FH-25



FH-27



FH-28



FH-29

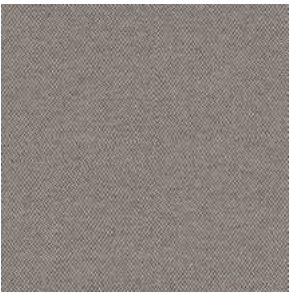
色卡之颜色因批次不同略有差异，以现货为准。
The color might have slight variations on the goods received due to different batch production.

医疗专用色·布·钢

CE



CE-01



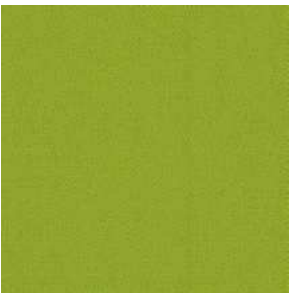
CE-02



CE-03



CE-06



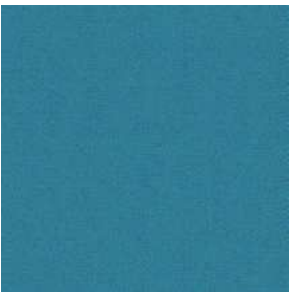
CE-07



CE-08



CE-09



CE-10



CE-13



CE-16



CE-19



CE-24



CE-26



CE-32



CE-35

色卡之颜色因批次不同略有差异，以现货为准。
The color might have slight variations on the goods received due to different batch production.

医疗专用色·布·钢

CE



CE-36



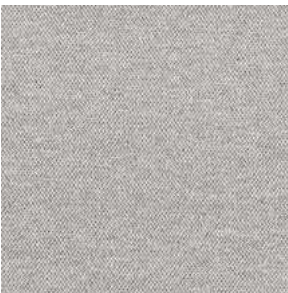
CE-38



CE-42



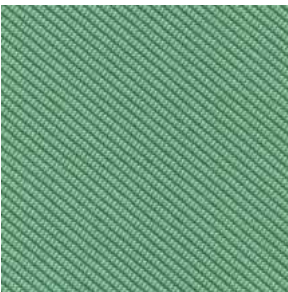
CE-45



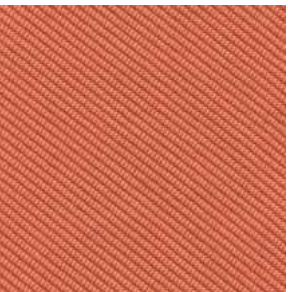
CE-46



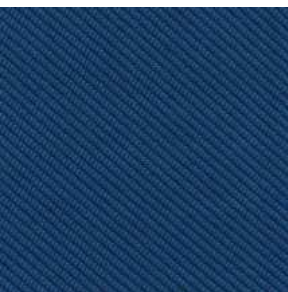
CO-03



CO-04



CO-05



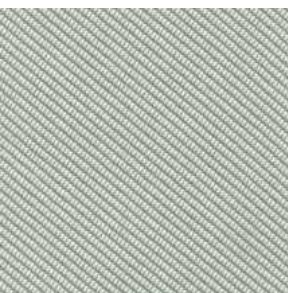
CO-06



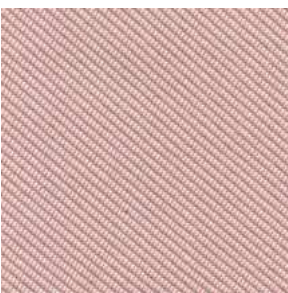
CO-11



CO-12



CO-13



CO-16

色卡之颜色因批次不同略有差异，以现货为准。
The color might have slight variations on the goods received due to different batch production.

CO

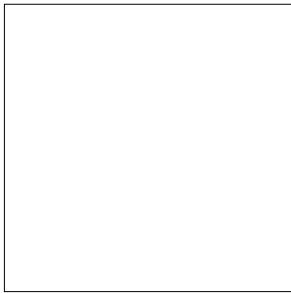
SC 医疗专用色·布·钢



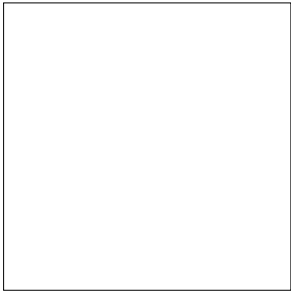
SC-01 宝石黑



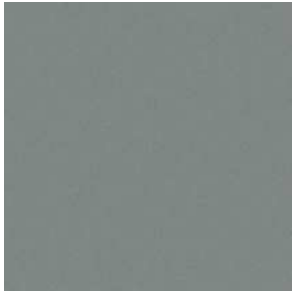
SC-02 半光黑



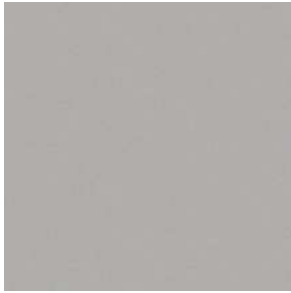
SC-03 雪砂白



SC-04 晨曦白



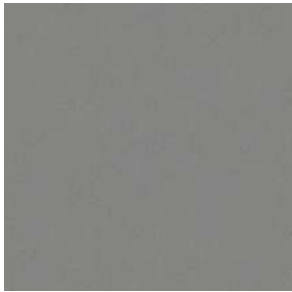
SC-05 公爵灰



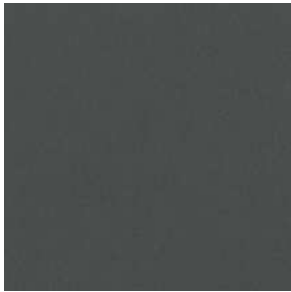
SC-06 太空灰



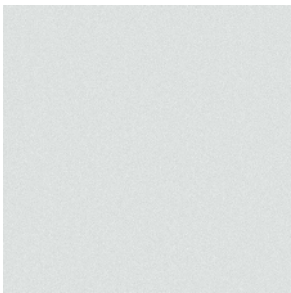
SC-07 钛晶灰



SC-08 陶然灰



SC-09 氟碳银



SC-10 流砂银



SC-11 熔岩红



SC-12 活力橙



SC-13 柠檬黄



SC-14 梧桐黄



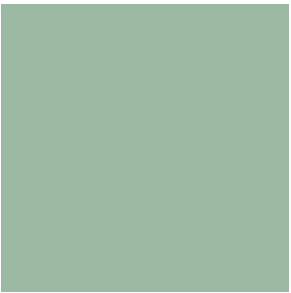
SC-15 苹果绿

色卡之颜色因批次不同略有差异，以现货为准。
The color might have slight variations on the goods received due to different batch production.

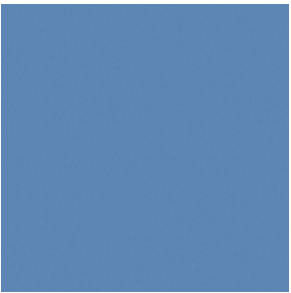
SC 医疗专用色·布·钢



SC-16 橄榄绿



SC-17 峻茂绿



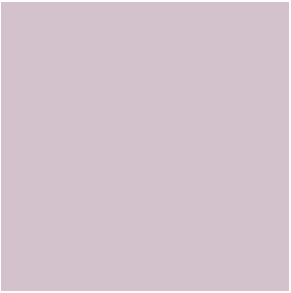
SC-18 湖水蓝



SC-19 碧海蓝



SC-20 摩卡



SC-21 杜若粉



钢板榉木

色卡之颜色因批次不同略有差异，以现货为准。
The color might have slight variations on the goods received due to different batch production.

创造美好办公生活
Create a Better Office Life



400 886 8212
www.onlead.com.cn

华东生产基地
南京市高淳经济开发区双湖路121号

华中生产基地
荆门市东宝区长兴大道海太欧林科技园